

- ⓓ **Bedienungsanleitung**
Handsender HSD2
- ⒼⒷ **Operating Instructions**
HSD2 Hand Transmitter
- Ⓕ **Notice d'utilisation**
Emetteur HSD2
- ⓃⓁ **Gebruiksaanwijzing**
Handzender HSD2
- Ⓔ **Instrucciones de manejo**
Emisores manuales HSD2
- Ⓘ **Istruzioni per l'uso**
Telecomando HSD2
- Ⓟ **Instruções de funcionamento**
Telecomandos HSD2



reddot design award



ENGLISH

Dear Customer,

Thank you for choosing this quality product from our company.

Keep these instructions in a safe place for later reference!

Important information

Keep your hand transmitter out of the reach of children!
Hand transmitters should only be used by those who have been instructed in the use of the remote-controlled door system!

Only use the hand transmitter when the door is in your direct line of sight! Programme the remote control in the garage in the direct vicinity of the operator! Only original components should be used for operating the remote control!

Never place or store the hand transmitter in direct sunlight!
The hand transmitter is to be kept clean and dry at all times!

The hand transmitter's function may become impaired if you ignore the instructions given above and it becomes damp!

Permitted ambient temperature: -20 °C to +60 °C

Local conditions may affect the useful range of the remote control!

If used simultaneously, GSM 900 mobile phones may affect the useful range of the remote control.

Fig. 1

Description of the HSD2 hand transmitter

- (a) LED
- (b) Control buttons
- (c) Battery compartment cover
- (d) CR2025 battery
- (e) Key chain
- (f) Screw sleeves
- (g) Key to open/close the
 - battery compartment cover (c) and
 - tighten/release the screw sleeves (f)

Fig. 2

Extending the remote control

Note

If you do not have a separate entrance to your garage, all changes or programming extensions should be made inside the garage.

When programming or making extensions to the remote control make sure that persons or objects are not located within the movement range of the door.

1. Place the transmitter that is to "teach" the code (teaching transmitter) (A) and the transmitter that is to learn the code (learning transmitter) (B) directly next to one another.
2. Press and hold the designated button on the teaching transmitter. The LED will then light up and remain lit.

Note

The signal lockout must be deactivated – see Fig. 3.

3. Press and hold the designated button on the learning transmitter immediately afterwards – the LED on the learning transmitter will flash slowly and begin to flash quicker when the learning routine was successful.
4. Release the buttons on both transmitters.

Do a function test! If the transmitter does not function correctly, repeat steps 1-4.

**CAUTION!**

Pressing a button on the teaching transmitter during the learning routine may cause the door to move if the receiver programmed to trip the door is located in the near vicinity!

Note

The learning routine will be cancelled if you release the button on the learning transmitter during the slow-flashing phase.

Fig. 3**Activate/deactivate the lockout**

Alternately press both control buttons quickly in any order. The following LED signals indicate whether or not this process was successful:

- Lockout activated – three quick signals
- Lockout deactivated – one long signal

Fig. 4**Fastening to a key**

The HSD2 hand transmitter is fastened to a key as seen in Fig. 4.

Fig. 5

Inserting or exchanging the battery

Only use CR2025 batteries with this hand transmitter. Pay attention to correct polarity.

Fig. 6

Care of the hand transmitter

The hand transmitter should only be cleaned using a soft, dry anti-static cloth.

EC Manufacturer's Declaration of Conformity

Manufacturer

Verkaufsgesellschaft KG
Upheider Weg 94-98, D-33803 Steinhagen

Product

Hand transmitters for door operators and accessories

Product description

HSD2

Product identification

HSD2-868

Device type

HSD

Frequency

868.3 MHz

CE label

CE 0682

Intended for use in all EU countries, Norway, Switzerland and others.

The products described above comply, in their design and form, with the pertinent underlying requirements of the guidelines detailed below in the versions sold on the market.

This declaration loses validity

if changes are made to the product which we have not approved.

Pertinent provisions with which the product complies

Compliance of the products described above with the regulations laid down for the guidelines according to article 3 of the R&TTE Guidelines 1999/5/EC is demonstrated by the products' adherence to the following standards:

EN 300 220-1

EN 300 220-3

EN 301 489-1

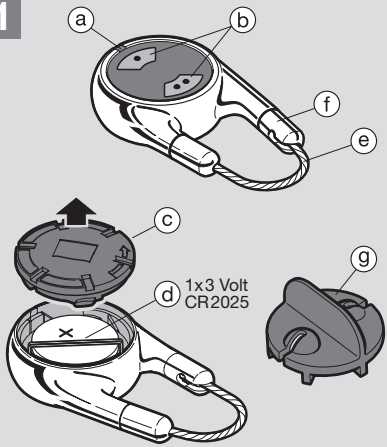
EN 301 489-3

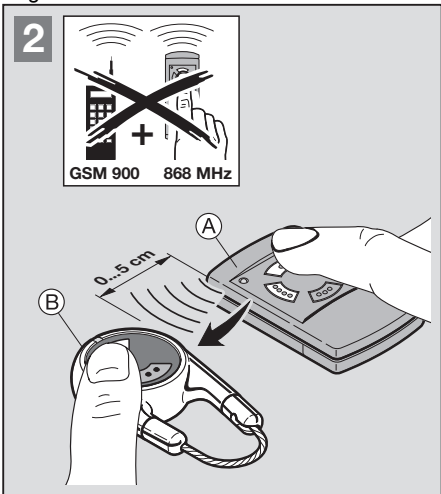
Steinhagen, 05/03/2007

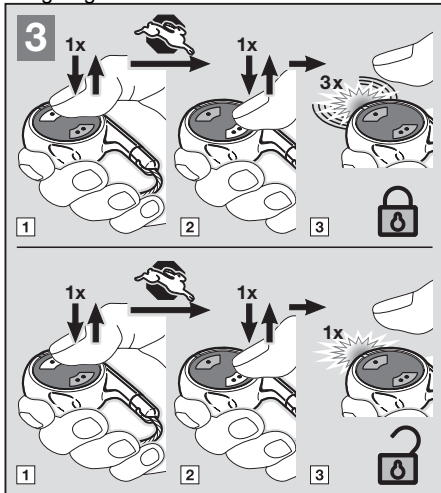


ppa. Axel Becker
Managing Director

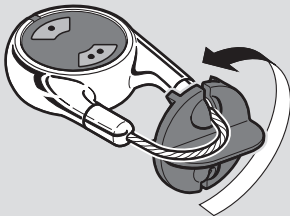
1



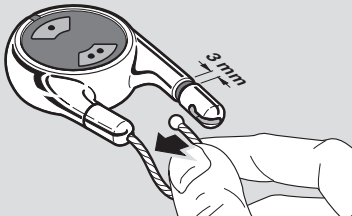




4

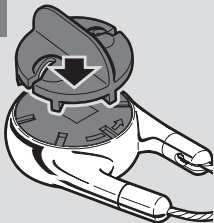


1

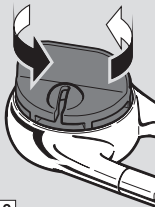


2

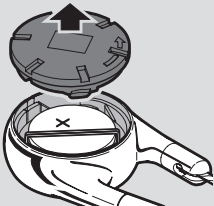
5



1



2



3

1x3 Volt
CR2025



4

6

