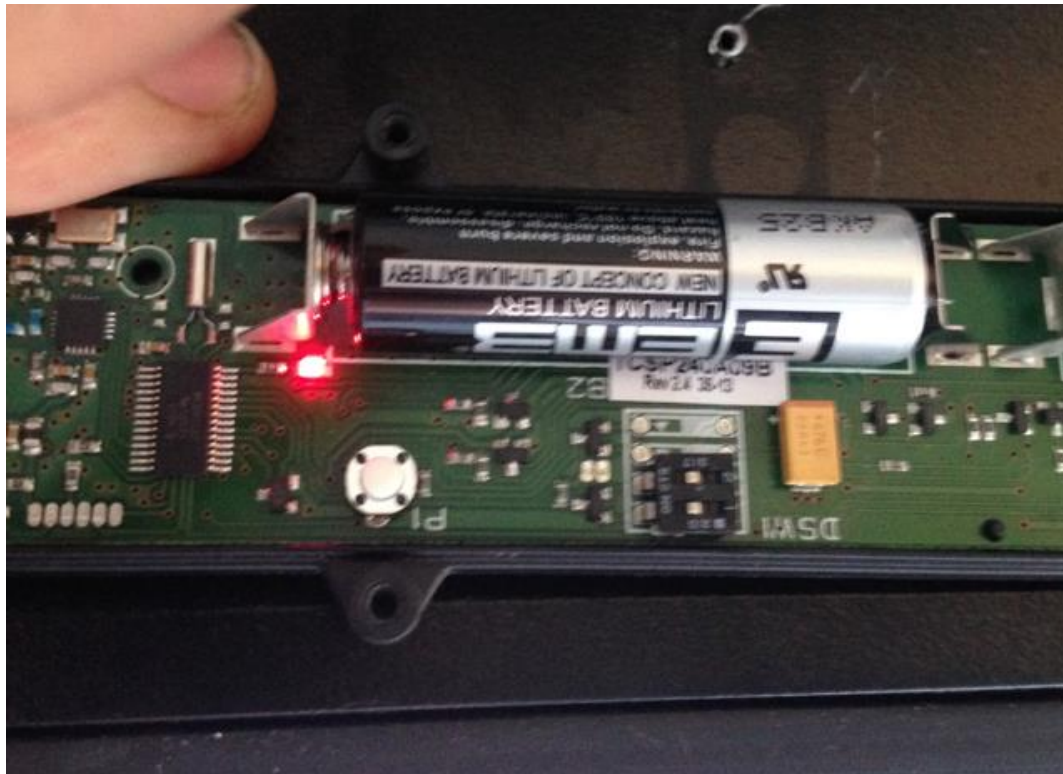


Changing bottom slat rubber

- Assessing the door before carrying out any work
- Removal of BST unit
- Removal of Rubber
- Replacing Rubber
- Replacing BST
- Testing door

Assess the for before replacing any parts

Test that the door is still functioning and the BST still works correctly.



Carry out dip 2 test on old rubber



Removal of BST from bottom rail

Remove all the screws that secure the BST to the bottom slat



01926 463888

Disconnect and cut the wires



www.garagedoorsonline.co.uk

Removal of the old rubber

Remove the bottom slat stoppers and raise the door to the fully open position



Take the Bottom slat out of the guides, then pull the optical eyes out of the rubber.



Removing the rubber edge.

1. Always leave the longest optical cable in place. (Never pull on it)
2. Remove the shorter cable on the same side as the BST (much easier to thread the cable back through)
3. Where the cable goes up through the slat drill out with a slightly larger drill (this will allow the hard T to slide in and out easier)
4. If you undo the webbing on the bottom slat this will give you extra side room when sliding new rubber back on.
5. Ensure you protect the Bottom slat from rubbing against the brickwork.
6. Use DW40 to lightly lubricate the rubber and the optical eyes

Replacing the rubber Edge

Slide the new rubber edge back on before cutting until it's all the way across.



01926 463888

Cut a small slot in the rubber to allow the wire to pass through.



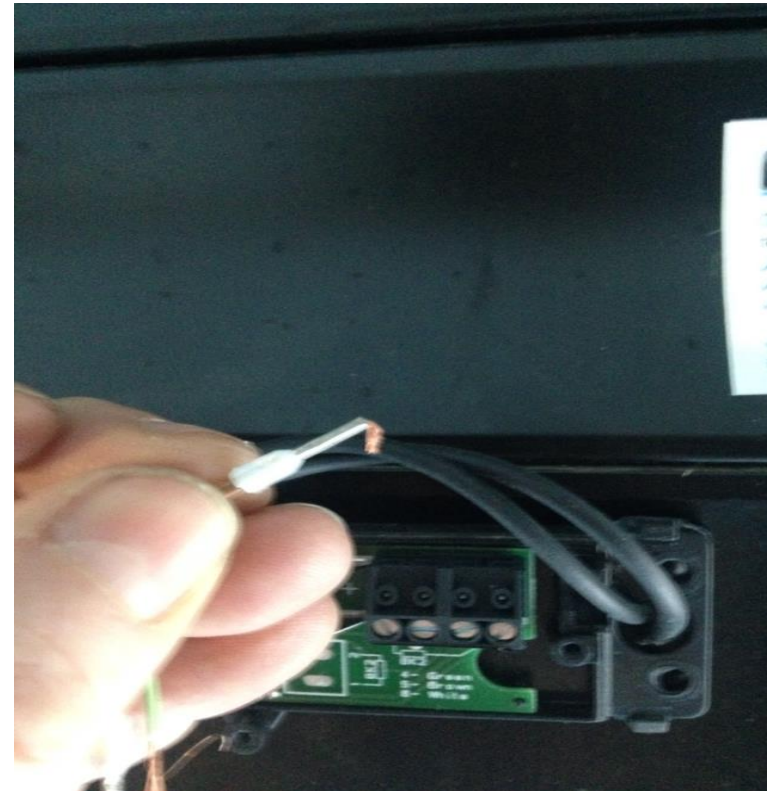
www.garagedoorsonline.co.uk

Replacing the rubber Edge

Feed both wires through the bottom slat a prepare to fit the BST



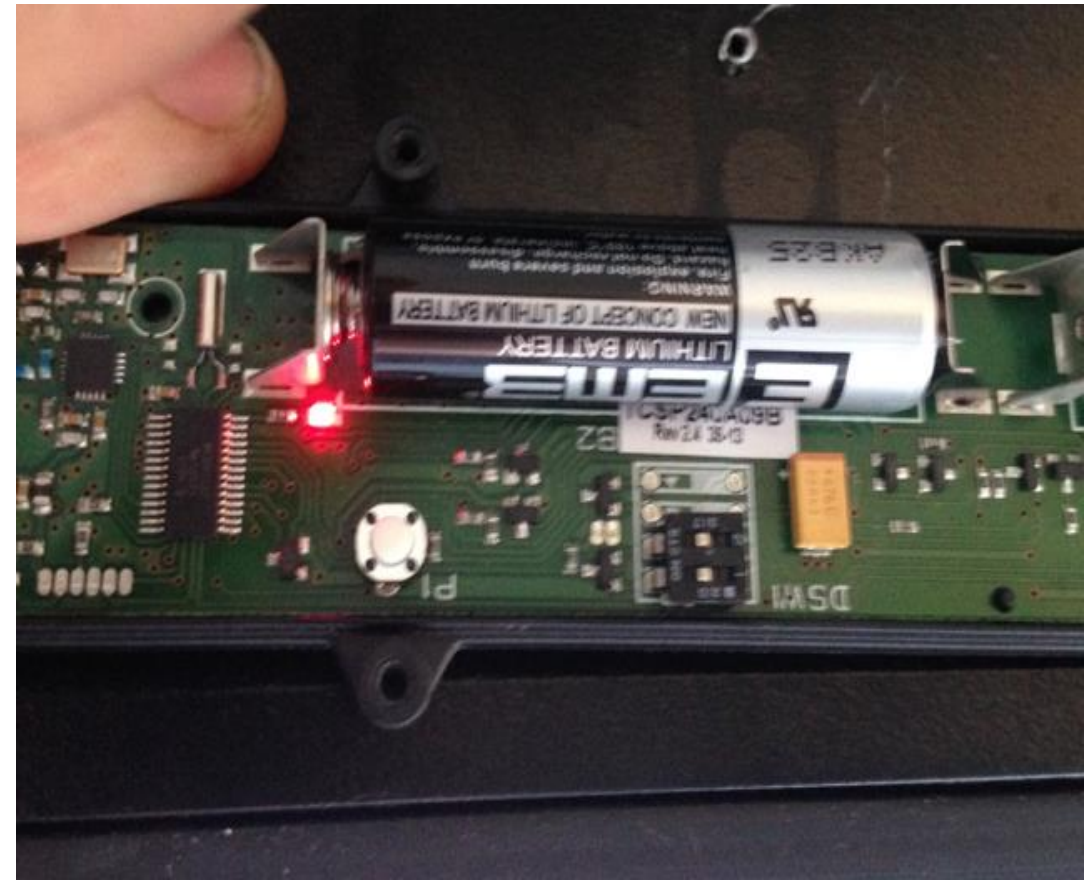
Reconnect the wire a push the copper wires all the way through the feral before crimping.



Replacing the BST

Before you fix the BST to the bottom slat, take the door to the fully open position and replace in the guides.

Once you have connected the wires then you must do dip2 test to ensure the door is working correctly.



Commissioning the door after changing the rubber

1. Once you have tested the door ensure that all wires are correct.
2. That the webbing is secured to the bottom rail.
3. The blocks that support the bottom rail are secure.
4. The safety edge is working.
5. Re-fit stoppers to the bottom slat.
6. Run the door fully and check the safety edge is fully functioning.
7. Ensure that the rubber is all the up too the blocks and there are no gaps.