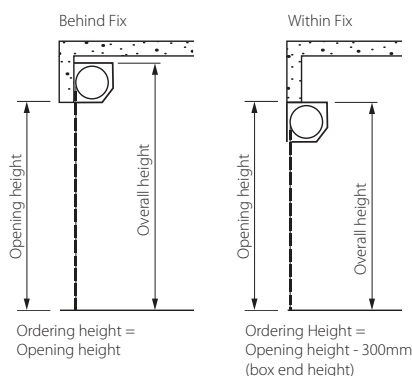
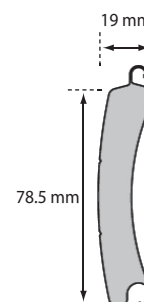


Ordering Size

Ordering size is the over guide width (OGW) x guide height (GH).
 Doors up to 3000mm wide have 70mm wide guides
 Clear opening width = ordering size - 140mm
 Doors over 3000mm wide have 90mm wide guides
 Clear opening width = ordering size - 180mm
 Clear opening height = guide height - 110mm
 (to allow for the bottom slat hang-down into the guide)

Slat Profile

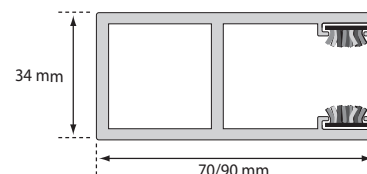


Fixing Options

Doors can be fitted within or behind the opening. Suitable clearance must be available for the door guides and box ends. Doors fitting within the reveal must have the box end height (300mm) deducted from the opening height to calculate the guide height (GH).

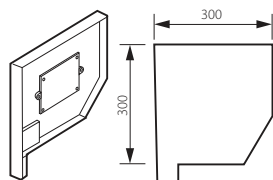
Door Guides

Door guides are 70mm or 90mm wide dependent on door size (see above) and 34mm deep.



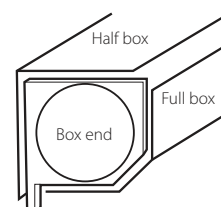
Box Ends

The box ends, to which the door mechanism is attached, fit at the top of the guides and are 300mm high and 300mm deep. The overall height of the door is the guide height (GH) + 300mm (box end height).



Door Box Options

The box ends can be fitted with an optional half box (90° section) to partially enclose the door mechanism or a full box (90° section + 90° section with 45° return) to fully enclose the door mechanism.



Full and half box (optional extra)

Control Options

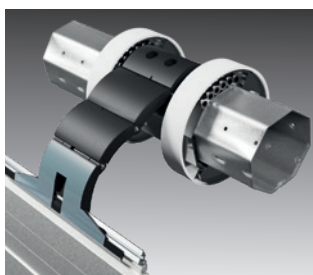
The door is supplied with an indoor hold-to-run rocker switch as standard. An optional outdoor key switch, Genesis control unit or Teleco Simple control unit are available. The Teleco Simple is supplied with 2 keyfob hand transmitters and a wired safety edge.



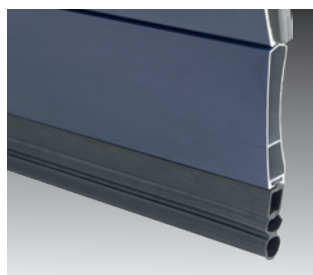
Indoor Rocker Switch



TELECO
AUTOMATION



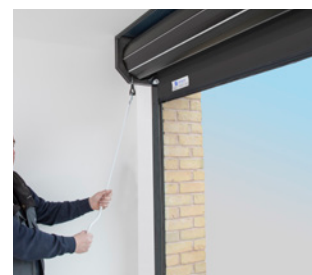
Strong locking straps prevent forced lifting of the door.



The extruded aluminium bottom slat adds extra strength to resist forced entry.



Where applicable, a safety brake prevents the door from dropping in the unlikely event of a motor failure.



Emergency override means the door can be operated in the event of power failure.

SIZE RANGE

Doors are available made to measure across the size bands shown:

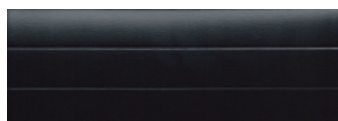
| Guide Height | Over Guide Width (70 mm Guides) | | | Over Guide Width (90 mm Guides) | | | |
|--------------|---------------------------------|------|------|---------------------------------|------|------|------|
| | 2000 | 2500 | 3000 | 3500 | 4000 | 4600 | 5200 |
| 2000 | | | | | | | |
| 2150 | | | | | | | |
| 2300 | | | | | | | |
| 2450 | | | | | | | |
| 2650 | | | | | | | |

COLOURS

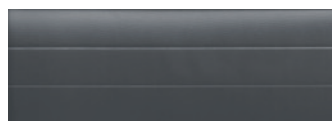
Standard Colours



White RAL 9016

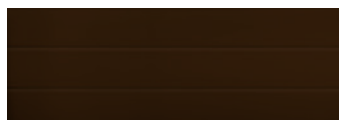


Black RAL 9005



Anthracite RAL 7016

Premium Colours (surcharge applies)



Brown RAL 8014



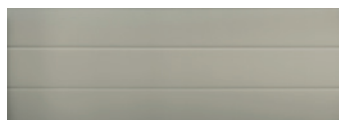
Chartwell Green



Navy Blue RAL 5011



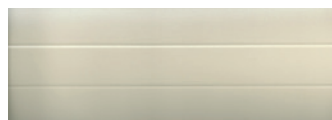
Burgundy RAL 3004



Light Beige BS 08B17



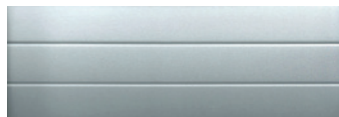
Fir Green RAL 6009



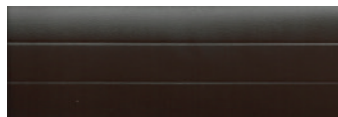
Ivory RAL 1015



Agate Grey RAL 7038



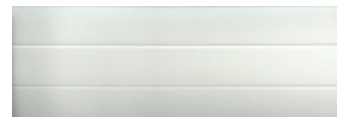
Silver Metallic RAL 9006



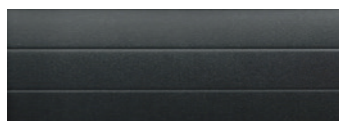
Dark Brown RAL 8019



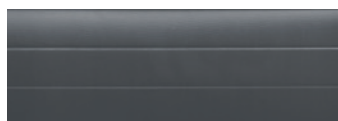
Moss Green RAL 6005



Cream White RAL 9001



Graphite



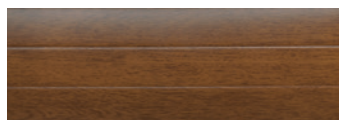
Slate Grey RAL 7015



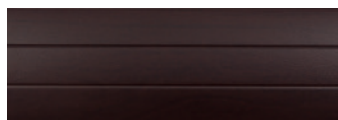
Duck Egg Blue



Irish Oak



Golden Oak

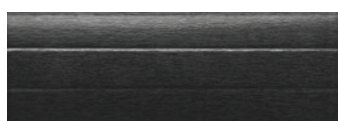


Rosewood

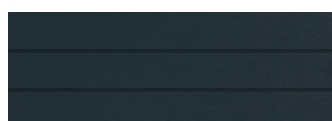
Woodgrain Laminates (surcharge applies)



White Laminate



Black Laminate



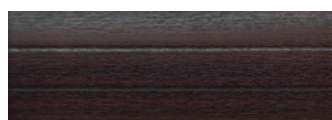
Anthracite Laminate



Irish Oak Laminate



Golden Oak Laminate



Mahogany Laminate



Rosewood Laminate