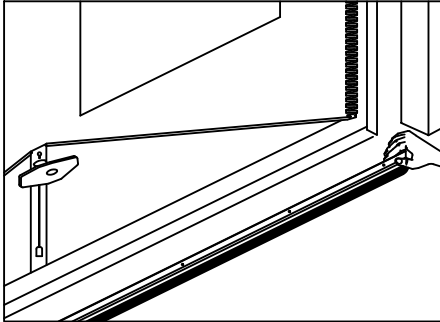
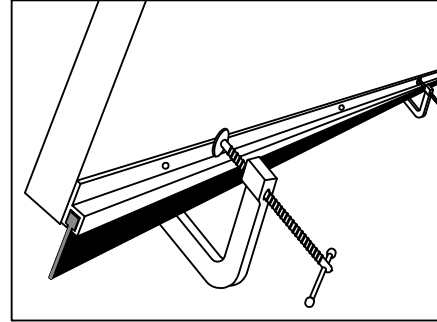


GARAGE BOTTOM DOOR SEAL FITTING INSTRUCTIONS



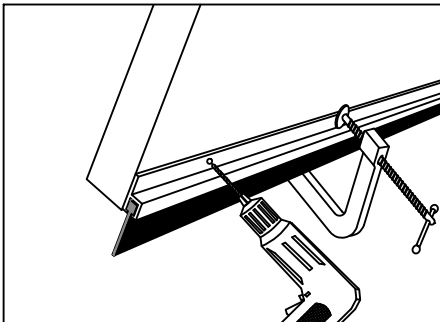
STEP ONE

Select the best position to fix the seal to the bottom inside edge of the door. Pre-drill fixing holes into the seal carrier if required.



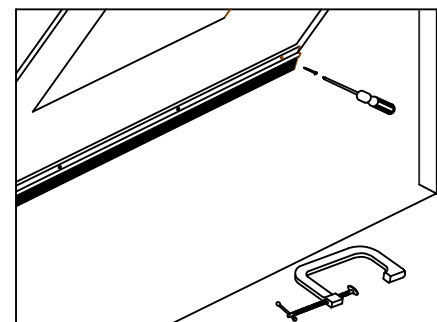
STEP TWO

Hold the aluminium carrier into position with a couple of clamps or fixing tape (another pair of hands may also be useful).



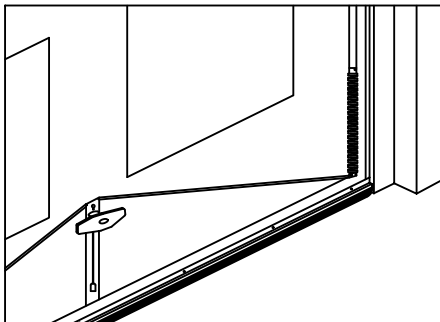
STEP THREE

Once you are happy with the position, mark with a pencil through the holes or using a 2.5mm drill bit, drill through the pre-drilled holes into the door skin whilst still clamped.



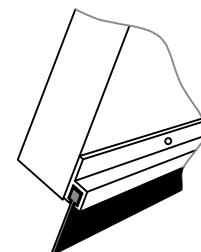
STEP FOUR

Screw in the self tapping screws provided using a cordless drill / screwdriver and remove any clamps.

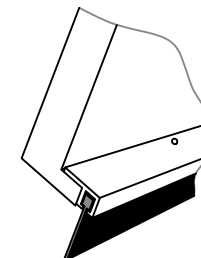


STEP FIVE

Make sure the door shuts correctly, seal may need ends trimming depending on door type or locking mechanism.



Standard
180° seal carrier



Some doors
require a
90° seal carrier