

# THE CARTECK AUTOTREND

CarTeck Remote Control Sectional Garage Doors



Great value,  
no compromise  
on quality and  
fast delivery in  
as quick as 3-4  
weeks!



# THE CARTECK AUTOTREND RANGE



Designed specifically for the cost conscious buyer, the CarTeck AutoTrend range of remote control sectional garage doors offers great value without compromising on good looks or excellent performance.

Not only a great price, these doors are made to order in just **3-4\* weeks for stock designs and colours and just 6\* weeks for non-stock designs**. See each range for availability - stock designs and colours are grouped together and easy to identify with the pink spot - as shown to the right! \*The lead time depends on location and may also increase during periods of high demand - please check with your supplier. You should also allow additional time for scheduling installation with your garage door supplier.

**CarTeck AutoTrend, no compromise on quality!**

3-4\*  
week  
lead  
time

6\*  
week  
lead  
time

\*The lead time depends on location and may also increase during periods of high demand - please check with your supplier. You should also allow additional time for scheduling installation with your garage door supplier.

U value  
1.38  
W/m<sup>2</sup>K



# WHAT YOU GET WITH THE CARTECK AUTOTREND:



The option of a colour matched frame for the perfect finish!



All Trend colours, same price as white!



Made to measure, no restrictions on size and no cut-down charge!



## CarTeck MOTOR

CarTeck DRIVE MOTOR remote control opener, reliability made easy!

**UP TO** 4877mm wide x 2250mm high:

### The CarTeck MOTOR L60...



2 x 4-channel remote transmitter for effortless remote control operation!

**OVER** 4877mm wide x 2250mm high:

### The CarTeck MOTOR L75...



2 x 4-channel remote transmitter and a wireless wall switch for effortless operation!



Want to personalise your door?

See pages 12 - 15 for window options, decals and automation accessories.



# AUTOTREND SOLID



## CarTeck MOTOR

Includes a CarTeck MOTOR L60 or L75 remote control opener (dependant on door size). Both motors come with two 4-channel remote transmitter - The L75 includes an additional wireless wall switch.

[www.garagedoorsonline.co.uk](http://www.garagedoorsonline.co.uk)



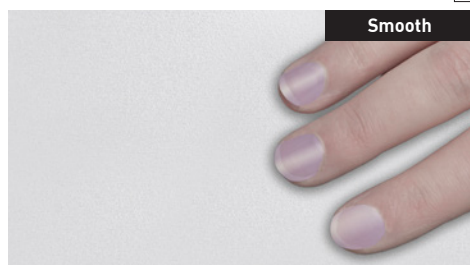
## The Modern Master

Simple, clean design sets apart the CarTeck AutoTrend Solid as the contemporary choice.

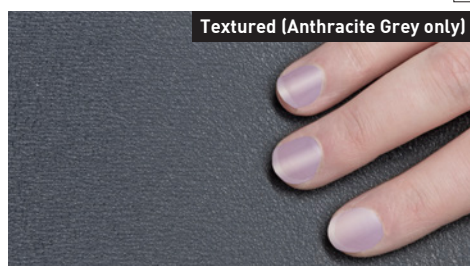


Choose from these surface textures and colours for 3-4 week lead time\*

### Surface Textures



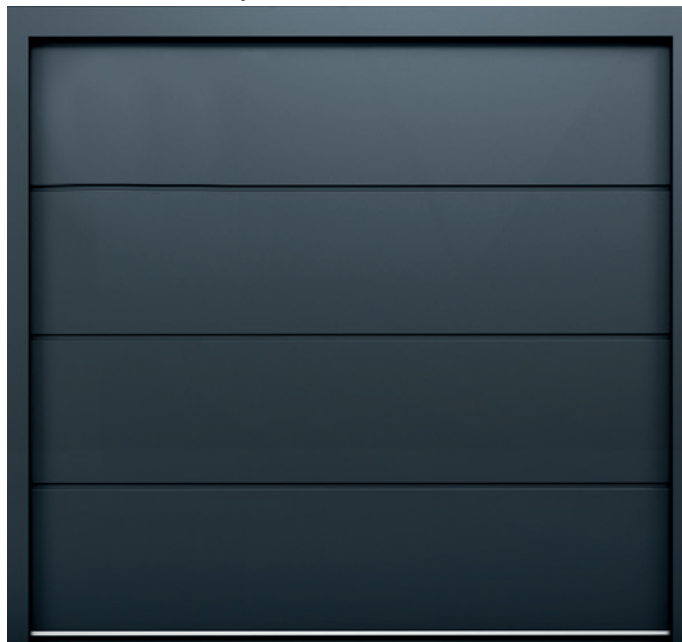
Smooth



Textured (Anthracite Grey only)

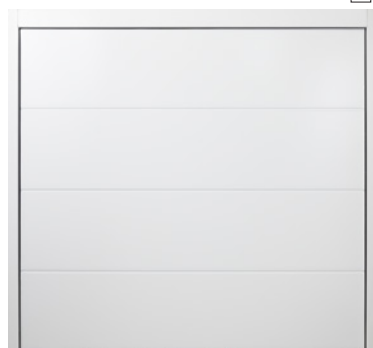
### Colours

#### Textured Anthracite Grey (RAL 9016)



Doors include the option of a colour matched\*\* frame for a complete look!

#### White (RAL 9016)



#### Anthracite Grey (RAL 7016)



#### Jet Black (RAL 9005)



Choose from these surface textures/colour combinations for a 6 week lead time\*

### Surface Textures



Smooth

Woodgrain

### Colours

For important notes on colour, please see the back page.

|                             |   |   |                             |                            |
|-----------------------------|---|---|-----------------------------|----------------------------|
| White<br>RAL 9016           | **TT9016 Bling White<br>with micaceous iron ore<br>particles glitter effect | Ice Crystal Grey<br>Aluminium   | White Aluminium<br>RAL 9006 | Grey Aluminium<br>RAL 9007 |
| Light Grey<br>RAL 7035      | Window Grey<br>RAL 7040   | Quartz Grey<br>RAL 7039   | Umbra Grey<br>RAL 7022      | Slate Grey<br>RAL 7015     |
| Anthracite Grey<br>RAL 7016 | Anthracite Textured<br>RAL 7016   | TT 703<br>A special satin metallic effect - grey<br>with micaceous iron ore particles | Jet Black<br>RAL 9005       | Steel Blue<br>RAL 5011     |
| Moss Green<br>RAL 6005      | Fir Green<br>RAL 6009   | Flame Red<br>RAL 3000   | Sepia Brown<br>RAL 8014     | Cream<br>RAL 9001          |

\*\*TT9016 Bling White frame legs, headers & 3D profiles are finished in RAL 9016.

\*The lead time depends on location and may also increase during periods of high demand – please check with your supplier.  
You should also allow additional time for scheduling installation with your garage door supplier.  
Tel: 01926 463 888

**TECKENTRUP**  
DOOR SOLUTIONS  
www.garagedoorsonline.co.uk

# AUTOTREND CENTRE RIB



## CarTeck MOTOR

Includes a CarTeck MOTOR L60 or L75 remote control opener (dependant on door size). Both motors come with two 4-channel remote transmitter – The L75 includes an additional wireless wall switch.

[www.garagedoorsonline.co.uk](http://www.garagedoorsonline.co.uk)



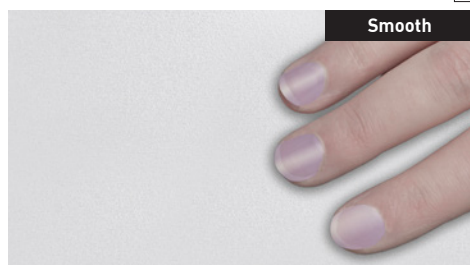
## The Style Master

Our most popular style. CarTeck AutoTrend's centre ribbed proportions give the door a refined designer feel that just works!

Choose from these surface textures and colours for 3-4 week lead time\*

3-4\*  
week  
lead  
time

### Surface Textures



Smooth



Woodgrain Textured

Doors include the option of a colour matched\*\* frame for a complete look!

### Colours

#### Anthracite Grey (RAL 9016)



#### White (RAL 9016)



#### Jet Black (RAL 9005)



6\*  
week  
lead  
time

Choose from these surface textures/colour combinations for a 6 week lead time\*

### Surface Textures



Smooth

Woodgrain

### Colours

For important notes on colour, please see the back page.

|                             |   |   |                             |                            |
|-----------------------------|---|---|-----------------------------|----------------------------|
| White<br>RAL 9016           | **TT9016 Bling White<br>with micaceous iron ore<br>particles glitter effect | Ice Crystal Grey<br>Aluminium   | White Aluminium<br>RAL 9006 | Grey Aluminium<br>RAL 9007 |
| Light Grey<br>RAL 7035      | Window Grey<br>RAL 7040   | Quartz Grey<br>RAL 7039   | Umbra Grey<br>RAL 7022      | Slate Grey<br>RAL 7015     |
| Anthracite Grey<br>RAL 7016 | Anthracite Textured<br>RAL 7016   | TT 703<br>A special satin metallic effect - grey<br>with micaceous iron ore particles | Jet Black<br>RAL 9005       | Steel Blue<br>RAL 5011     |
| Moss Green<br>RAL 6005      | Fir Green<br>RAL 6009   | Flame Red<br>RAL 3000   | Sepia Brown<br>RAL 8014     | Cream<br>RAL 9001          |

\*\*TT9016 Bling White frame legs, headers & 3D profiles are finished in RAL 9016.

\*The lead time depends on location and may also increase during periods of high demand – please check with your supplier.  
You should also allow additional time for scheduling installation with your garage door supplier.  
Tel: 01926 463 888

**TECKENTRUP**  
DOOR SOLUTIONS  
[www.garagedoorsonline.co.uk](http://www.garagedoorsonline.co.uk)

# AUTOTREND STANDARD RIB



## CarTeck MOTOR

Includes a CarTeck MOTOR L60 or L75 remote control opener (dependant on door size). Both motors come with two 4-channel remote transmitter - The L75 includes an additional wireless wall switch.

[www.garagedoorsonline.co.uk](http://www.garagedoorsonline.co.uk)



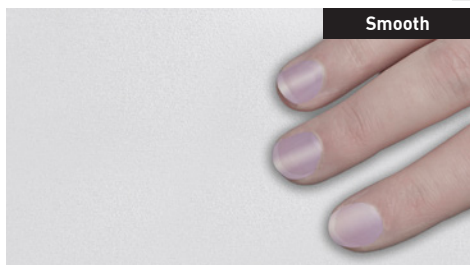
## Simple, Timeless

Horizontal rib styling is a wonderfully simple way to create a design that is at home on any style of house, choose white or add a splash of colour!

Choose from these surface textures and colours for 3-4 week lead time\*

3-4\*  
week  
lead  
time

### Surface Textures



Smooth



Woodgrain Textured

Doors include the option of a colour matched\*\* frame for a complete look!

### Colours

#### Anthracite Grey (RAL 9016)



#### White (RAL 9016)



#### Jet Black (RAL 9005)



6\*  
week  
lead  
time

Choose from these surface textures/colour combinations for a 6 week lead time\*

### Surface Textures



Smooth

Woodgrain

### Colours

For important notes on colour, please see the back page.

|                             |   |   |                             |                            |
|-----------------------------|---|---|-----------------------------|----------------------------|
| White<br>RAL 9016           | **TT9016 Bling White<br>with micaceous iron ore<br>particles glitter effect | Ice Crystal Grey<br>Aluminium   | White Aluminium<br>RAL 9006 | Grey Aluminium<br>RAL 9007 |
| Light Grey<br>RAL 7035      | Window Grey<br>RAL 7040   | Quartz Grey<br>RAL 7039   | Umbra Grey<br>RAL 7022      | Slate Grey<br>RAL 7015     |
| Anthracite Grey<br>RAL 7016 | Anthracite Textured<br>RAL 7016   | TT 703<br>A special satin metallic effect - grey<br>with micaceous iron ore particles | Jet Black<br>RAL 9005       | Steel Blue<br>RAL 5011     |
| Moss Green<br>RAL 6005      | Fir Green<br>RAL 6009   | Flame Red<br>RAL 3000   | Sepia Brown<br>RAL 8014     | Cream<br>RAL 9001          |

\*\*TT9016 Bling White frame legs, headers & 3D profiles are finished in RAL 9016.

\*The lead time depends on location and may also increase during periods of high demand – please check with your supplier.  
You should also allow additional time for scheduling installation with your garage door supplier.  
Tel: 01926 463 888

**TECKENTRUP**  
DOOR SOLUTIONS  
[www.garagedoorsonline.co.uk](http://www.garagedoorsonline.co.uk)



# AUTOTREND GEORGIAN



## CarTeck MOTOR

Includes a CarTeck MOTOR L60 or L75 remote control opener (dependant on door size). Both motors come with two 4-channel remote transmitter - The L75 includes an additional wireless wall switch.

[www.garagedoorsonline.co.uk](http://www.garagedoorsonline.co.uk)



## The Classic

The Georgian design features are a timeless favourite and work beautifully with the addition of windows for an added accent and natural light.

Choose from these surface textures and colours for 3-4 week lead time\*



### Surface Textures



Woodgrain Textured

#### Available Georgian panel sizes on 3-4 week lead time

Panel Size: Clear opening door width:

2246mm 2084mm - 2210mm  
2476mm 2211mm - 2440mm  
4608mm 4216mm - 4570mm

### Colours

White (RAL 9016)



Doors include the option of a colour matched\*\* frame for a complete look!

Compare a CarTeck Georgian panel design to any other door on the market. The CarTeck Georgian stamp has classic proportions compared to the shallower and shorter stamps of other profiles.

Visually, this means CarTeck Georgian doors are more attractive and better balanced in their overall proportions.



Choose from these surface textures/colour combinations for a 6 week lead time\*

### Surface Textures



Woodgrain

### Colours

For important notes on colour, please see the back page.

|  |  |   |  |   |
|--|--|---|--|---|
| <input type="checkbox"/> **TT9016 Bling White with micaceous iron ore particles glitter effect | <input type="checkbox"/> Ice Crystal Grey Aluminium  | <input type="checkbox"/> White Aluminium RAL 9006 | <input type="checkbox"/> Grey Aluminium RAL 9007 | <input type="checkbox"/> Light Grey RAL 7035      |
| <input type="checkbox"/> Window Grey RAL 7040  | <input type="checkbox"/> Quartz Grey RAL 7039  | <input type="checkbox"/> Umbra Grey RAL 7022      | <input type="checkbox"/> Slate Grey RAL 7015     | <input type="checkbox"/> Anthracite Grey RAL 7016 |
| <input type="checkbox"/> Anthracite Textured RAL 7016  | <input type="checkbox"/> TT 703 A special satin metallic effect - grey with micaceous iron ore particles | <input type="checkbox"/> Jet Black RAL9005        | <input type="checkbox"/> Steel Blue RAL 5011     | <input type="checkbox"/> Moss Green RAL 6005      |
| <input type="checkbox"/> Fir Green RAL 6009  | <input type="checkbox"/> Flame Red RAL 3000  | <input type="checkbox"/> Sepia Brown RAL 8014     | <input type="checkbox"/> Cream RAL 9001          |   |

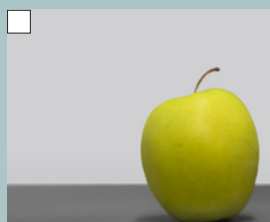
\*\*TT9016 Bling White frame legs, headers & 3D profiles are finished in RAL 9016.

\*The lead time depends on location and may also increase during periods of high demand - please check with your supplier.  
You should also allow additional time for scheduling installation with your garage door supplier.

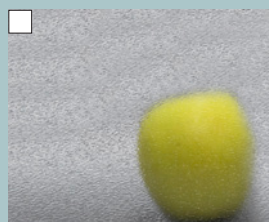
Tel: 01926 463 888

**TECKENTRUP**  
DOOR SOLUTIONS  
www.garagedoorsonline.co.uk

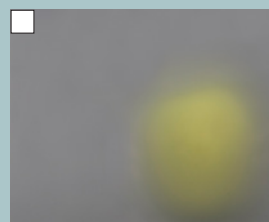
# AUTOTREND WINDOWS



Scratch-resistant Polymer  
Double Pane  
Clear



Scratch-resistant Polymer  
Double Pane\*  
Frosted

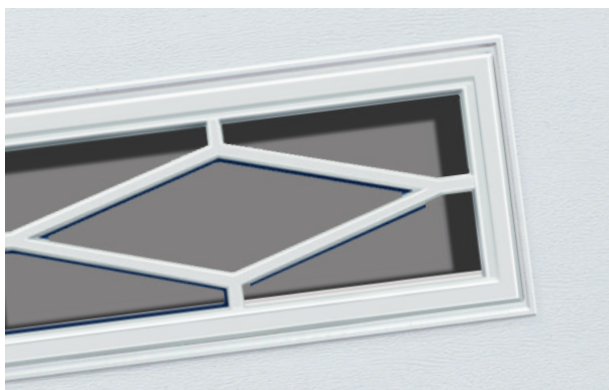


Scratch-resistant Polymer  
Double Pane\*  
Satin

\*The exterior pane is Frosted/Satin and the interior pane is Clear.

Scratch-resistant Polymer, double glazed windows in attractive designs allow natural light into your garage.

As harmonious integration or intentional contrast – aligned with other facades and windows, vision elements play a key role in shaping the overall architecture of your house.



Window frames are coloured to be similar to the door panel. Selected Trend colours are finished in a complementary flat colour Textured Anthracite (RAL7016), Ice Crystal Grey Aluminium (RAL9007) and TT9016 Bling White (RAL9016). The surrounds on aluminium GSA window sections are finished in a smooth finish.

Window frame colour shade and surface lustre will show a variance from the panel finish as the base material and coating methods are different.



Rectangle 1



Rectangle 2\*



Cross mullion



Rhombus Mullion



Square 1\*



Rectangle 3\*



Square 2\*



GSA Aluminium light strip

\*Not available on Georgian style

[www.garagedooronline.co.uk](http://www.garagedooronline.co.uk)

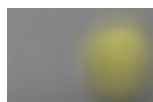


# AUTOTREND BLING

## Bling Windows

High-grade window units add natural daylight with a contemporary twist. Windows are constructed with an aluminium casement and polymer glazing unit.

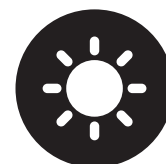
### Glazing Styles



Satin



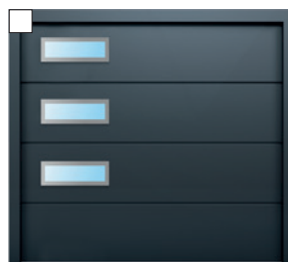
Clear



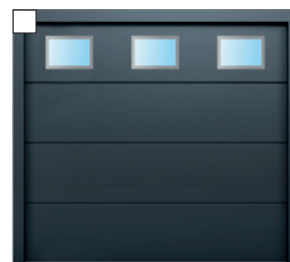
Athena - 406mm x 203mm



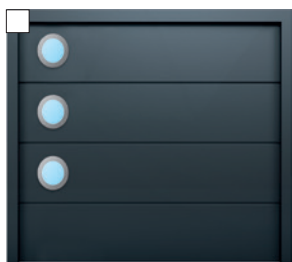
Versus - 900mm x 1000mm



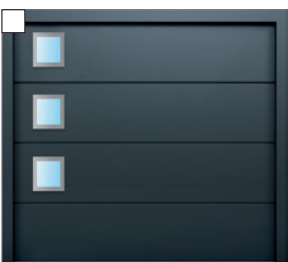
Sigma - 610mm x 200mm



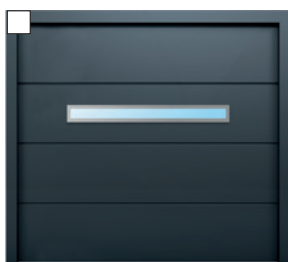
Gamma - 534mm x 344mm



Zeta - ø280mm



Alpha - 280mm x 280mm

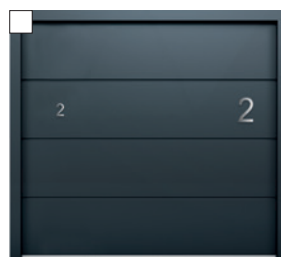


Kappa - 1860mm x 180mm

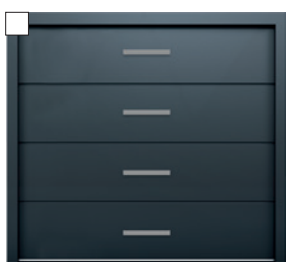
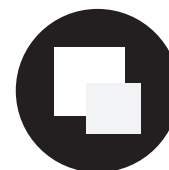
The images here and below show the most popular combinations. If you'd like alternative configuration, just ask!

## Decals

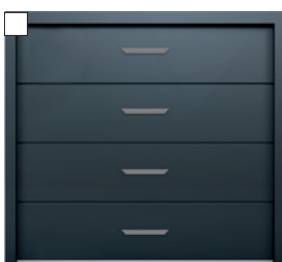
High-grade alunox decals are factory bonded to your door for added visual appeal. Each decal can be positioned to suit your sense of design, however, popular arrangements are shown here.



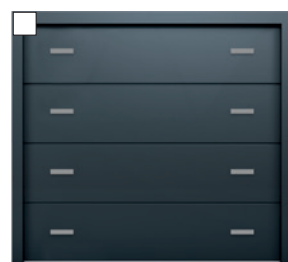
Writing  
100mm/200mm



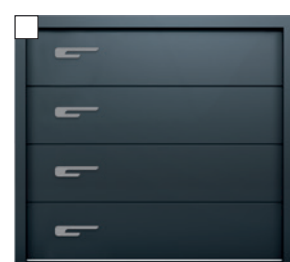
Access 1 - 431mm x 40mm



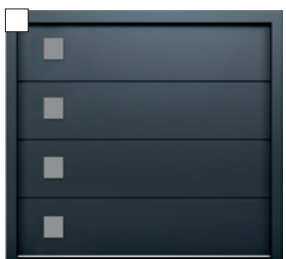
Access 2 - 430mm x 40mm



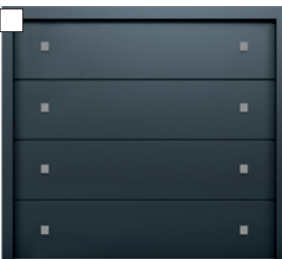
Access 3 - 215mm x 40mm



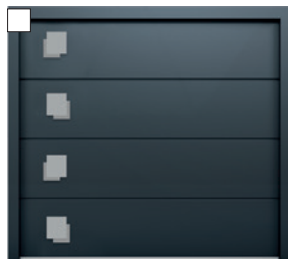
Access 4 - 400mm x 86mm



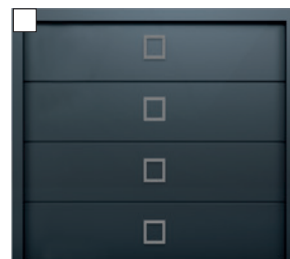
Access 5 - 180mm x 180mm



Access 6 - 70mm x 70mm



Access 7 - 150mm x 150mm



Access 8 - 194 mm x 194 mm

## Extras

Finishing touches to make your door easier to use.

### LETTER BOXES



Letter boxes are available finished in Satin Nickel as standard with an option for Gold, Rose Gold, Chrome, Black, White or Anthracite.

### SPY HOLES



### PET FLAPS

Pet Flaps, usually fitted to the bottom panel of a door!



# AUTOTREND DRIVE

## CarTeck MOTOR



KEEPING THINGS SIMPLE

The CarTeck MOTOR DRIVE offers simplicity and reliability rolled into one. With a choice of optional accessories, controlling your garage door is effortless and with MyQ, you can control your garage door from anywhere with a tap on your phone or tablet.

Our doors and openers are independently tested and certified to all current safety legislation and carry a CE/UKCA mark.



The CarTeck MOTOR DRIVE offers incredibly smooth and super-quiet garage door operation via a multi-frequency remote transmitter and have an integrated, powerful LED lighting system.

**UP TO** 4877mm wide x 2250mm high:



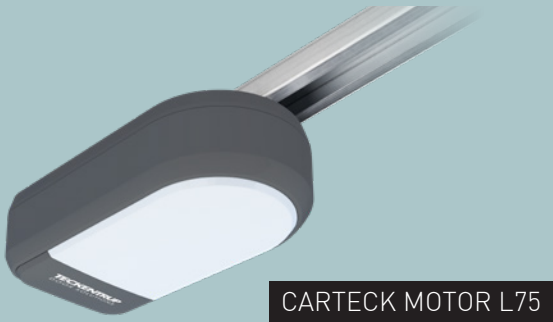
The CarTeck MOTOR L60 can lift doors up to 4877mm wide x 2250mm high. Included as standard are 2 x 4-channel remote transmitters. It is compatible with all accessories.



**2 x 4-channel remote transmitter for effortless remote control operation!**



**OVER** 4877mm wide x 2250mm high:



The CarTeck MOTOR L75 can lift all door sizes. Included as standard are 2 x 4-channel remote transmitters and a wireless 2-channel wall switch. It is compatible with all accessories.



**2 x 4-channel remote transmitter and a wireless wall switch for effortless operation!**



|           | POWER | TRANSMITTERS   | SPEED     | LIGHTING            | OPTIONS                         |
|-----------|-------|--|-----------|---------------------|---------------------------------|
| MOTOR L75 | 750Nm | 2 x 4-Channel Remote Transmitters & Wireless Wall Switch | 200mm/sec | 1 x LED Motor Light | All accessories see facing page |
| MOTOR L60 | 600Nm | 2 x 4-Channel Remote Transmitters                        | 160mm/sec | 1 x LED Motor Light | All accessories see facing page |



# AUTOTREND CONTROLS



## 4-CHANNEL REMOTE TRANSMITTER

Every CarTeck AutoTrend comes with two 4-channel remote transmitters. With extra large buttons for comfortable use and an attractive compact design, the CarTeck MOTOR's 4-channel remote transmitter makes it possible to control up to four doors.



## WIRELESS 2-CHANNEL WALL CONTROL

CarTeck AutoTrend doors over 4877mm wide x 2250mm high come with a wireless 2-channel wall control, suitable for internal use only - its elegant design is at home in any style of interior. Control up to two garage doors without needing your remote control to hand.



## OPTIONAL ACCESSORIES & TRANSMITTERS



### WIRELESS KEYPAD 433/868MHZ

The CarTeck MOTOR's wireless keypad is suitable for internal and external use and is simple to install. Set up a 4-digit pin for convenient and effortless access without the need to carry a key. You can also set up temporary codes for visitors.



### WIRELESS 2-CHANNEL WALL CONTROL

The CarTeck MOTOR's wireless 2-channel wall control is suitable for internal use only - its elegant design is at home in any style of interior. Control up to two garage doors without needing your remote control to hand.

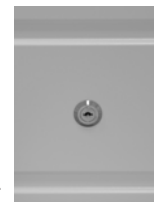


### MYQ LED RADIO LIGHT

For optimal illumination, the CarTeck MOTOR's MyQ LED radio light has flexible positioning options allowing for installation on the ceiling or wall (within 180cm of a 220V plug socket). Providing 1500 lumen and 4000k light, the light can be controlled via the MyQ app on a smart phone or with a remote control.

### EXTERNAL RELEASE

In the event of power failure, the motor can be disengaged using the discreet external release. This should be fitted if no alternative access to the garage is available to allow manual operation of the door until power returns.



### SMART PHONE CONTROL WITH MYQ

For complete control, integrate your garage door with your smart home for unrivalled convenience and security with MyQ. MyQ connects your garage door to your internet so you can control from your smart phone or tablet\*.

MyQ Gateway



Light barrier



**\*Requires a light barrier for safe remote operation.**



### SAFETY ABOVE ALL

Safe operation of an insulated CarTeck AutoTrend is the overriding priority of every design decision we make. Precise manufacturing tolerances ensure quality is high and long-term reliability and durability is inherent, which in turn maintains safety.



### FINGER SAFE & HAND PROTECTION

The patented finger pinch protection at panel joints protects you from injury.

Protection at the side of the door prevents a hand from being accidentally caught between the frame and guide rail.

### EXTERNAL RELEASE

In the event of power failure, the motor can be disengaged using the discreet external release. This should be fitted if no alternative access to the garage is available to allow manual operation of the door until power returns.



### QUIET DOOR OPERATION

Innovative designs worked out in great detail, such as rollers made from special plastic, ensure quiet opening and closing. Rattling door movements are a thing of the past.

# MAXIMUM





Concealed springs shown from above with the covers removed.

## CONCEALED SPRINGS

Where is the best and safest place for springs? One place - concealed and enclosed, high up in top trays, safely away from fingers. The trays also keep the springs in pristine condition, ensuring long-term smooth and quiet operation.



Safe, concealed springs



Visible, dust traps and potentially within reach of inquisitive little fingers



## CARTECK MOTOR DRIVE GUARANTEE

### 5-year manufacturer's guarantee

- on mechanical defects, material and manufacturing flaws. (opening/closing max. 5 times a day)\*

\* Consumable Items are not included within warranty terms and conditions: hand transmitters, light bulbs, fuses & batteries.



The warranty periods below only apply to products that have been correctly installed as per the instructions, maintained by a Garage Door Specialist and operated and cleaned in accordance with the requirements set out in the operating and maintenance sections of instructions and labels.

## CARTECK SECTIONAL 6 POINT GUARANTEE

### 2-year manufacturer's guarantee

- on polymer and aluminium window units

### 5-year manufacturer's guarantee

- on SLX & GSA Vision windows, rollers, hinges, cable pulleys, cables and standard springs (opening/closing max. 5 times a day)

### 10-year manufacturer's guarantee

- on panels against rust penetration from inside to outside
- against door panel separation of steel from foam
- on material and manufacturing flaws of all non-moving parts of the frame that are verifiably unusable or whose usability is substantially compromised
- on floor seal, intermediate seals, side seals and lintel seal against rotting

The guarantee does not apply to doors that are subjected to extreme conditions, e.g. corrosive influences resulting from use in a coastal climate with high salt content.

## SAFETY SENSING

The motor control units' safety circuits monitor force levels many times every second. If the door encounters an obstruction, it is instantly sensed and the motor stops and reverses a short distance.

Terms & conditions apply - see: [www.teckentrup.co.uk](http://www.teckentrup.co.uk)

Our doors and openers are independently tested and certified to all current safety legislation and carry a CE/UKCA mark.



# SAFETY & PERFORMANCE



# WARM, DRY & FEWER DRAUGHTS

## PERFORMANCE CHARACTERISTIC

|   |                   |
|---|-------------------|
| <b>Resistance to Windload</b><br>EN 12424           | <b>Class 2</b>    |
| <b>Watertightness</b><br>EN 12425                   | <b>Class 2</b>    |
| <b>Air Permeability</b><br>EN 12426                 | <b>Class 2</b>    |
| <b>Thermal Transmittance</b><br>EN 13241            | <b>1.38 W/m²k</b> |
| <b>Operating Forces</b><br>(hand operated) EN 12604 | <b>150 N</b>      |

## INSULATION 'U VALUE'

What's in a number? Our 40mm thick panels have an insulating value that has been independently tested to 0.56 W/m²K. The lower the value the better the insulating properties.

It's not a figure we tend to quote because we know a door is more than just a panel. We quote the insulation value for a complete door

(8'0" wide x 7'0" high) including the panel joints and weather strips. CarTeck Automatic has an insulation 'U value' of 1.38 W/m²K - you won't find better performance on any comparable garage door.

## WHAT PERFORMANCE CAN I EXPECT?

As part of the CE/UKCA marking process, each product must have its performance provided for a defined set of characteristics to allow fair comparison between products from different manufacturers. Other characteristics can also be included, if relevant to a door's performance. The following table shows the performance characteristics of CarTeck AutoTrend sectional garage doors.

For more information on what performance you can expect from your garage door, visit the Honesty Page on the Teckentrup website - [www.teckentrup.co.uk/garage-doors/the-honesty-page](http://www.teckentrup.co.uk/garage-doors/the-honesty-page)



HONESTY PAGE  
- SCAN ME!





## LOOKING FOR...



### MORE COLOURS?

#### **The options are endless!**

Choose from a range of Trend colours, wood effect finishes or any RAL colour.



### SIDE DOORS?

#### **The perfect match!**

Add easy and elegant access on foot with a matching side door! See the CarTeck Side Hinged brochure for the full range!

## AVAILABLE WITH CARTECK AUTOMATIC!



You'll find an array of options available with our CarTeck Automatic range of garage doors! Scan the QR code to download copy of the brochure for all the details...



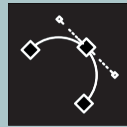
Teckentrup is a family business with operations throughout the world. In the UK, we make our garage doors in Warrington, Cheshire. CarTeck is available through a national network of independent Garage Door Specialist installers.

Teckentrup offers more than garage doors...  
We provide solutions and have set three quality standards for our garage doors:

# Design. Security. Service.



April 2025



## Design

### We combine ease of use with aesthetics

Good design uses innovative technology to make using a product intuitive and effortless. CarTeck garage doors offer a wide range of design options that will transform the look of your home and the way you use your garage space.



## Safety & Security

### We combine security with safety

Our products are designed to provide peace of mind with both physical security and the knowledge that durability and safe operation are inherent.



## Service

### We combine speed with reliability

The Teckentrup team and our network of Garage Door Specialists installers love to make your new door a pleasure to own. From planning to installation. You'll always receive expert advice and the best service for installation, maintenance and after-care.

## Quality & Environment

Teckentrup operates to quality procedures audited to ISO 9001. We care about the environment too - this is why our products are certified in accordance with the Environmental Product Declaration (EPD).



**ISO 14001 Environmental Management**  
**ISO 50001 Energy Management**

**TECKENTRUP**  
DOOR SOLUTIONS

Tel: 01926 463 888



**WWW.TECKENTRUP.CO.UK**

[www.garagedoorsonline.co.uk](http://www.garagedoorsonline.co.uk)