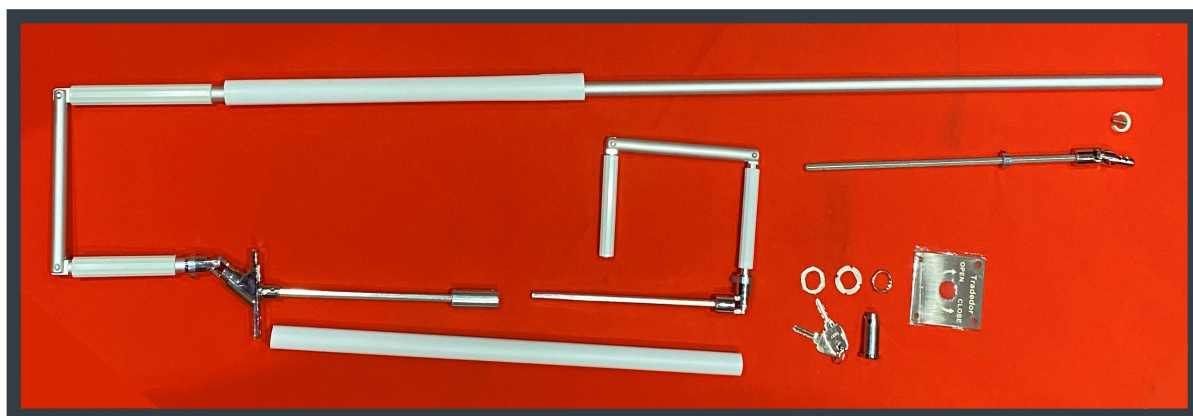


# EXTERNAL OVERRIDE

## Installation Guide

Edition 2022/1



# Installation RDEORM External Override Kit

- 1** Mark the height you require your external override to go through the wall and drill a 25mm hole through the wall all the way.
- 2** Place the longer thinner plastic tube into the hole so the end is flush with the front of the brick work (**fig.1**) the rest of the tube will be inside the garage (**fig.2**) mark tube where the wall line is and then cut the tube to size.
- 3** Detach the universal joint from the long internal arm by removing the pin and keep the pin safe for later (**fig.3**).
- 4** Use a 2mm allen key to remove all 4 grub screws from the cylindrical attachment and remove from bar (**fig.5 & fig.6**). Measure the length of the plastic tube and cut the bar from the universal joint (**fig.4**) so it is 120mm shorter than this measurement, then slide the cylindrical attachment back on the bar but only 20mm before securing in place with 2 grub screws (**fig.5**) remaining 2 grub screws are not needed.
- 5** Insert the shaft all the way into the plastic tube, then insert the tube into the wall from the inside, the tube should be flush on the outside (**fig.7**), with the universal joint vertical, mark the 2 fixing points then drill and secure to the wall.
- 6** Your external fixing plate is universal with directions of rotation depending on what side your motor is on, it needs to be put together with the lock (**fig.8**).



fig.1



fig.2



fig.3



fig.4



fig.5



fig.6



fig.7



fig.8



fig.9



fig.10

- 7 To assemble the lock first place the flat washer onto the lock cylinder, then slide the faceplate on the correct way round (left hand motor = close on the left, right hand motor = close on the right), then place the indented washer on with the indents facing inwards followed by the locking nut and tighten (fig.9).
- 8 Take the lock and plate to the outside and place in plastic tube the correct way up (if the lock wont go all the way in so it is flush against the wall you may need to adjust the barrel or cylinder on the universal joint), mark the 4 fixing points before removing and drilling fixings, reinsert the locking plate and fix into position (fig.10).
- 9 Remove the plastic clip from the end of the long shaft (fig.11) this will release the shaft for the motor, remove the screw from the end of shaft and the support collar then insert the shaft into the top box, once past the header plate place the collar back on and then continue to insert the shaft into the motor, once all the way through re attach the screw in the end to hold in place (fig.12).

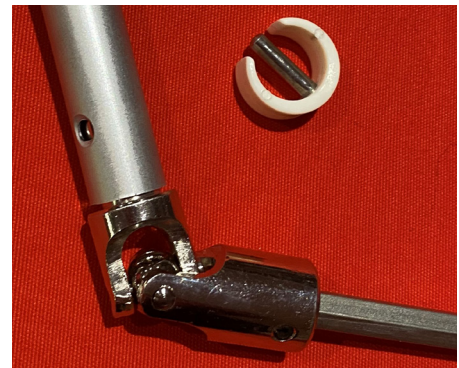


fig.11



fig.12

- 10** Reconnect the universal joint at the wall to the long shaft making sure it is straight (**fig.13**) then take it up to the joint as the motor shaft end, you can change the angle by adjusting the position of the collar inside the header box and securing in place (**fig.12**), once happy with the position, measure, mark and then cut the long shaft to size.
- 11** Drill a 5mm hole in the end of the long shaft in line with hole in the joint, slide the large short plastic tube over the end of the long shaft (**fig.14**) then slide the long shaft into the joint before reattach the plastic pic through hole (**fig.15**).
- 12** The External override kit is now installed (**fig.16**) remove the lock and test to make sure everything works as it should by inserting the handle into the cylinder head hole (**fig.17**) making sure the handle shaft lines up and seats all the way in before turning.
- 13** Lastly check the handle inside to make sure this works as well, slide the plastic cover on the long shaft (**fig.14**) up to reveal the handle (**fig.13**), remove the metal pin (**fig.3**) to release the handle, bend joints to make handle shape and test before reattaching.



fig.13



fig.14

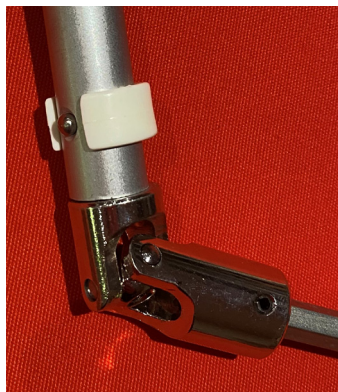


fig.15



fig.17

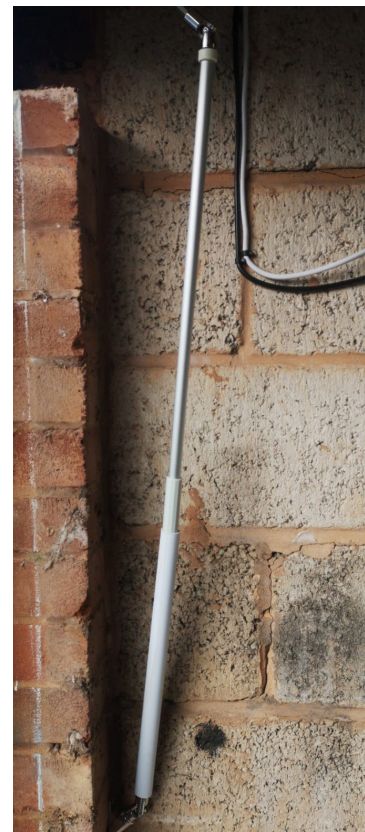
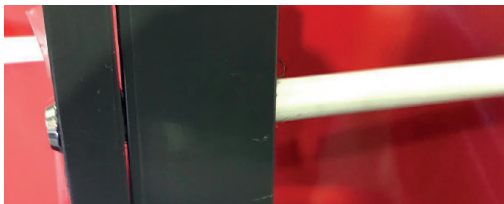


fig.16

# Installation RDEOBP External Override Kit

- 1** Your RDEOBP external override kit is made up of 3 parts (**fig.19**).
- 2** Mark the height you require your external override to go through the wall and drill a 22mm hole through the wall all the way.
- 3** Place the plastic tube into the hole from the front with the plate flush against the outside wall and mark the 4 holes for fixing the plate (**fig.20**).
- 4** Then go inside and mark the length to cut off the plastic insert (**fig.18**).
- 5** Remove from the wall, drill 4 fixings outside and cut plastic tube to size then reinsert in wall.
- 6** Insert universal joint at bottom of shaft into the plastic tube end and mark 2 fixing holes (**fig.21**).
- 7** Mark the length you need to cut the shaft to make fit with stem.
- 8** Cut shaft to size and drill a 5mm hole in the shaft so you can reapply clip to attach shaft to stem.
- 9** Drill fixing holes for universal joint.
- 10** Attach shaft to stem with clip and place universal joint into plastic tube and screw to wall (**fig.22**).
- 11** Remove lock and check to make sure the unit turns.



**fig.18**



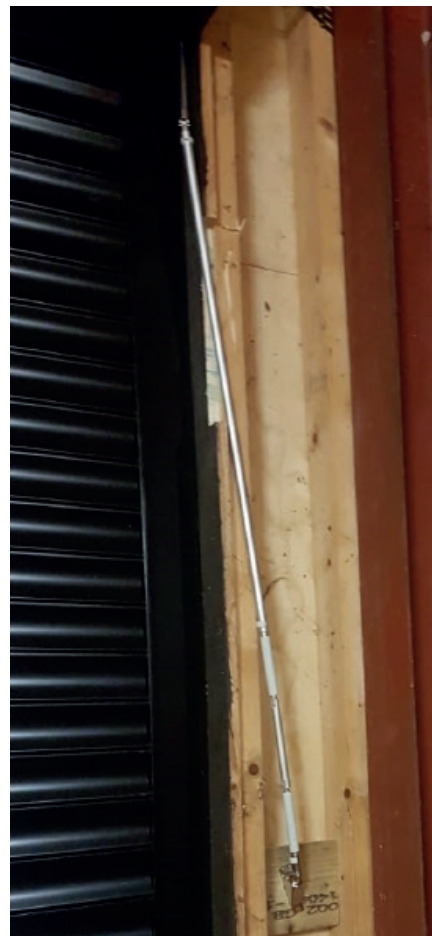
**fig.19**



**fig.20**



**fig.21**



**fig.22**