



# FITTING COMPOSITE DOORS

Frame Fitting / Door Fitting / Hinge Adjustment / MPL Instructions

**HÖRMANN**

# PVC Frame Fitting

## Installation

---

### Pre-installation

- ❶ Check the opening is plumb and square.
- ❷ The opening should be free of debris and mortar. Clean off any debris to ensure a flat surface for the door unit to sit on.
- ❸ Check the size of the door in relation to the opening and set aside.
- ❹ Check the handing of the door prior to installation.

### Frame Installation

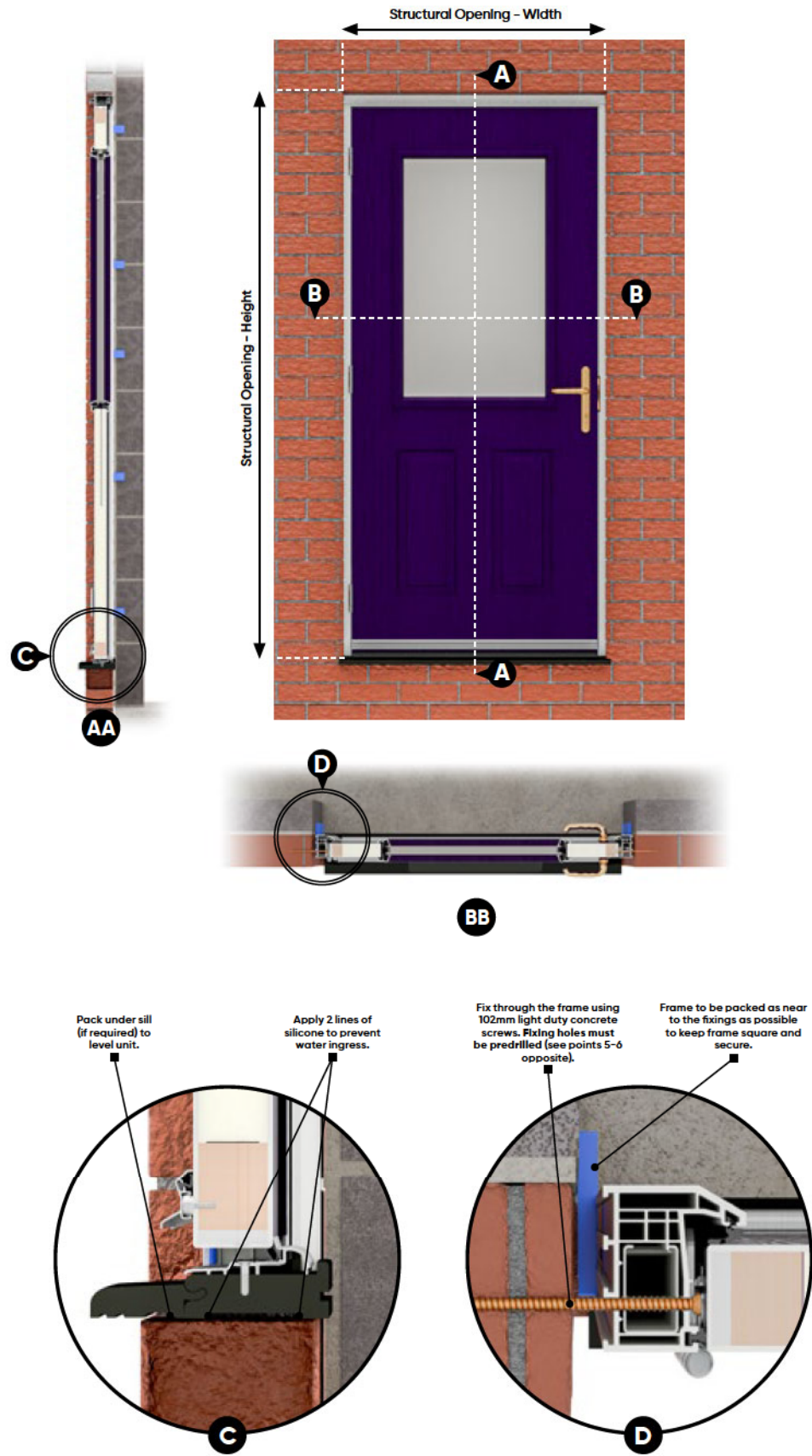
- ❶ Apply 2 lines of silicone seal to the floor slab where the sill will sit to prevent water ingress - see **Detail C**.
  - ❷ Centre the door in the opening and position from the front of the brickwork as required in builders specification.
  - ❸ Level under the sill using packers if required - see **Detail C**.
  - ❹ Using a long level square up both the hinge side and the lock side (side to side and front to back) and fit packers to keep the unit square and secure.
    - ☐ **Note: Packers must not be removed.**
  - ❺ Fix the hinge side jamb first at the top and bottom of the frame using the recommended fixing kit - see **Detail D**.
    - ☐ Top and bottom fixings to be no more than 150mm from the top and bottom of the frame
  - ❻ Check the frame is square, repeat the process for the lock side jamb. Re-check the frame is square again and has a consistent gap at the head and down both jambs.
  - ❼ Fix the unit with remaining fixings, we recommend 5 fixings per jamb.
    - ☐ Remaining fixings to be no more than 600mm centres and must be placed to avoid clashing with the hinge or lock keeps.
  - ❽ Once the unit has been securely fixed, check the squareness and adjust accordingly.
  - ❾ Adjust the hinges as necessary to maintain an even gap between the door and frame, refer to manufacturers adjustment guide for instructions.
  - ❿ Check the operation of the door and ensure that the lock fully engages into the frame keeps, adjust keeps as required.
  - ⓫ Finish the installation by sealing between the door frame and supporting structure, sealing can be as customer standard details or be filled with expanding foam and capped both sides with silicone sealant.
- **Additional Notes:**
- ☐ Additional fixings can be used to fix through the frame if required.
  - ☐ If required a fixing through the sill can be added.

De-glaze the sidelight, mark up the beading so it can be re-fitted to its original location and set aside in a safe area
  - ☐ Fix the door unit as detailed above but add additional fixings, one through the head of the door frame (approx. central to the door) and another fixing through the head of the sidelight frame as near to the coupling joint as possible to add stability to the unit.
  - ☐ Re-fit the sidelight glass and beading.



# PVC Frame Fitting

## Installation



# Adjustment of Multipoint Lock Keeps

## Finish & Maintenance

After installation of the door, a final check should be made on keep alignment to ensure smooth operation of the lock mechanism and a tight seal against the frame weatherseal.



■ Typical upper lock mechanism



■ Typical lower lock mechanism

### Important:

- Close the door until the latch engages within the keeps. With the latch engaged there should be compression against the weatherseal in the frame. The internal face of the door should be flush with the internal face of the frame. (For open-out doors this will be the external faces).
- There are two problems that can arise from poorly adjusted lock keeps:
  - Firstly, keeps that have been adjusted too far into the rebate can make the door difficult to close and possibly lead to premature lock failure.
  - Secondly, keeps that are adjusted too close to the frame edge can result in poor compression on the seals which is likely to result in draughts and rattling doors.
- If you find you have either of these problems then adjust the keeps to the correct positions.

### Making Adjustments:

- 1 Adjustment is made by slackening off the keep adjustment screws. NB: There is no need to completely remove these screws for adjustment.
- 2 Once the screws have been loosened, close the door until the latch locates in the centre keep and lightly push the door to ensure the door face is flush with the frame jamb face.
- 3 Now lift the handle to 'throw' the locking mechanism. This will engage all bolts into the loosened keep plates.
- 4 Carefully push the handle down to disengage the bolts and open the door.
- 5 Re-tighten all adjustment screws. The door locking mechanism should smoothly operate when the bolts are 'thrown' into the keeps. If not, repeat steps 1 - 5.



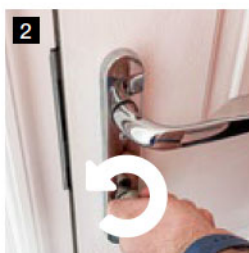
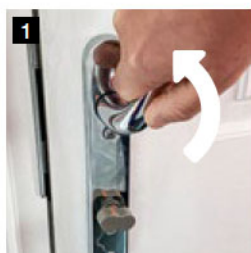
# MPL Operating Instructions

Finish & Maintenance



## To unlock and open the door from INSIDE:

- Turn thumb turn clockwise
- Pull handle downwards



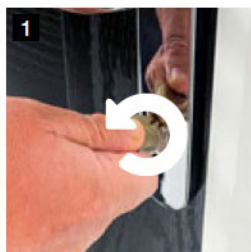
## To lock the door from INSIDE:

- Firmly lift handle upwards
- Turn thumb turn anti-clockwise



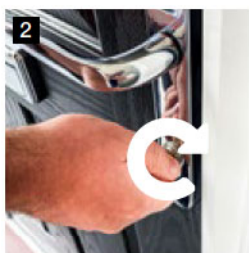
## To hold latch back (SNIB):

- With door in unlocked, open position, pull handle downwards
- Slide the plastic snib up 5mm over latch when retracted, then gently release handle
- To release latch, slide snib down 5mm and latch will click out



## To unlock and open the door from OUTSIDE:

- Insert key into cylinder and turn anti-clockwise
- Pull handle downwards and open the door
- Remove key



## To lock the door from OUTSIDE:

- Firmly lift handle upwards
- Turn key one full turn to lock and remove key

### Maintenance

- All moving parts (e.g. latch & hooks) should be lightly lubricated using a light non-acidic mineral oil (e.g. "3 in 1") twice per year, and the surface cleaned with a soft damp cloth.
- The MPL fixings may need adjusting to ensure a satisfactory operation.
- Please note, the keeps are factory set but can be adjusted for ease of operation and to give a tighter compression against the weatherseal.

### How to Test Lock Failure

- Opening the door, lifting the handle and testing the lock.
- If lock works while the door is in the open position then the issue is not with the lock.
- Revert back to installing and check the keeps are adjusted and the frame is square and plumb.

# Hinge Adjustment Instructions

Finish & Maintenance



## Vertical Adjustment:

- ❶ All hinges adjust together.
- ❷ Support underside of door with lever.
- ❸ Slacken screw B on each hinge.
- ❹ Lift or lower door to desired position.
- ❺ Tighten screw B on each hinge.
- ❻ Check operation of door.

## Side Adjustment:

- ❶ Hinges adjusted individually.
- ❷ To move door closer to frame slacken screw B & tighten A screws.
- ❸ To move door away from the frame, slacken A screws & tighten screw B.
- ❹ Check operation of door.



# Hinge Adjustment Instructions

Finish &amp; Maintenance

## Open Out Adjustment



### Firstly:

With the door open wide, locate the grub screw port.

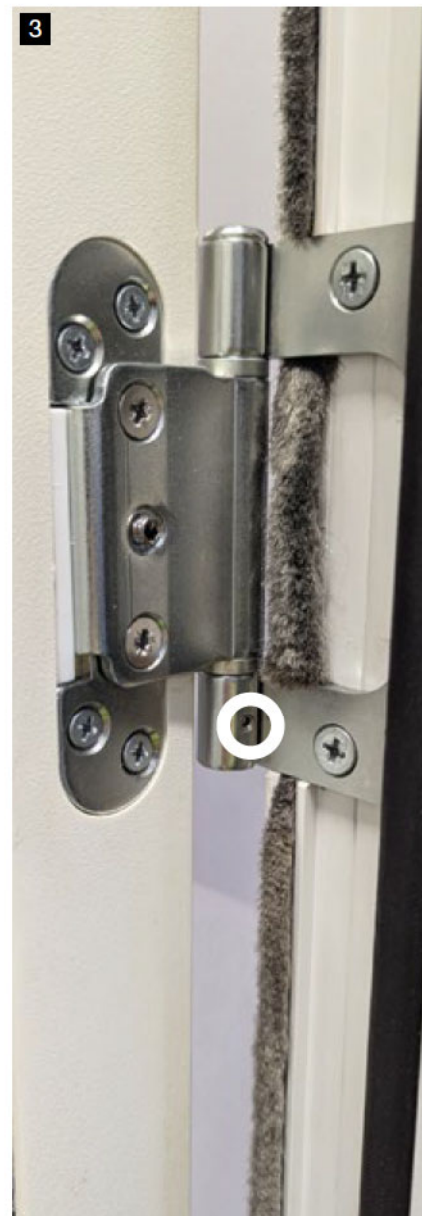
This may be on the lower or upper portion of the hinge knuckle depending on the handing of the door.



### Secondly:

Collect an M4x5 grub screw and the included H2 Allen key in the pack, and using the key insert the grub screw into the port.

Rotate the grub screw clockwise to fix into place.



### Finally:

The grub screw is completely inserted when it cannot be turned clockwise anymore, and the grub screw is flush with the outer face of the hinge knuckle.

# Security Dog Bolts

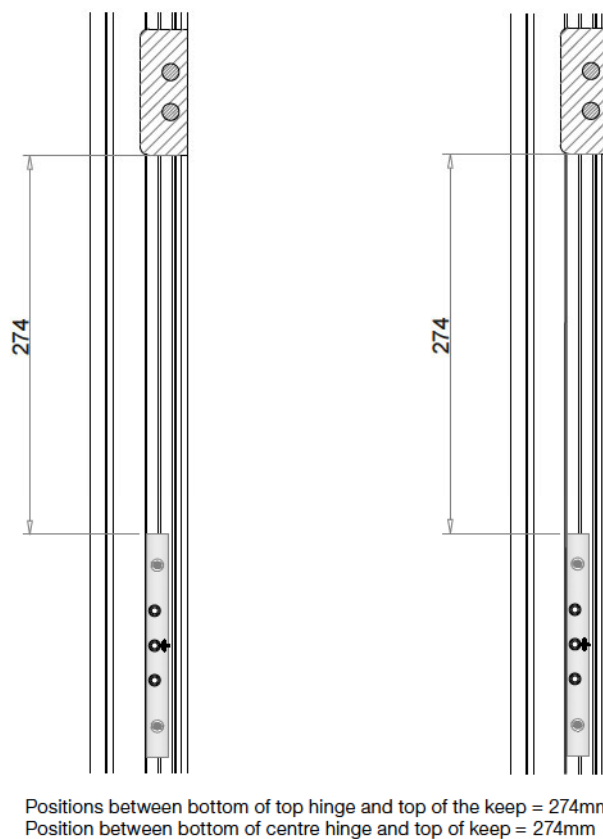
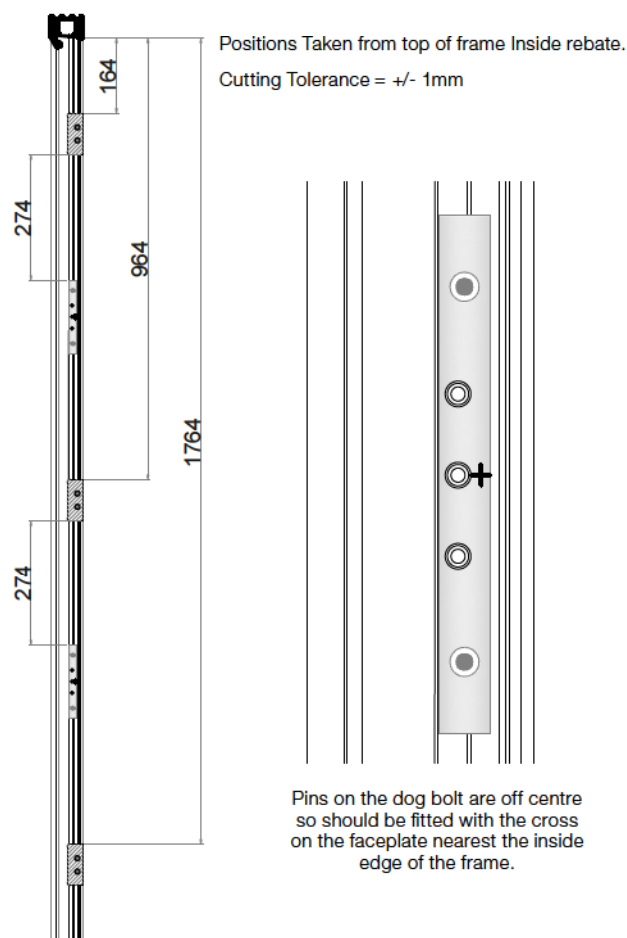
## Information & Fitting

# Fitting Security Bolts

**TRIPLE-HINGE BOLTS.** To take the security of our composite doors to an even higher level, we also supply our specially designed dog bolt system as standard. This involves two sets of triple-hinge bolts that secure the composite door to the frame, protecting you against intruders. Designed to complement our existing high security multi-point lock.

### Fitting the frame part:

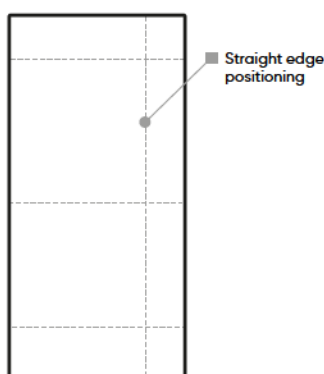
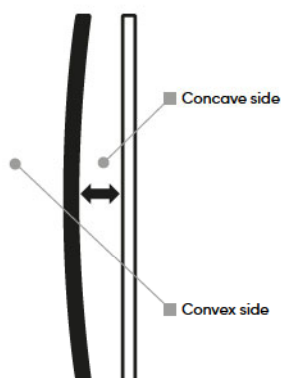
- It is recommended to fit the security bolts only once all the adjustments of hinges and keeps are complete and the door is fitted in its final position.
- Check that the bolt receivers have been fitted to the door and do not need any preparation.
- Measure down from the top of the door to the centreline of the middle hole in the receiver.
- Measure down from the top of the frame and mark the position, taking into account the head gap at the top of the door.
- The security bolt part has a cross marking the centreline of the part and this should line up with the centre of the receiver.
- The bolt part should be fixed in position with the cross mark to the pile seal / bead groove but with the bolt tight to the small rib in the central rebate as per the picture below.





# Suspected Bowed Leaf

## Troubleshooting



### What is a bowed door?

A door can experience two types of bowing: either Thermal Bow or Natural Bow. A bowed door would appear to be curved (bowed) when looking at either the face or edge of the door.

Bowing of the door can occur naturally during changes in temperature or within prolonged periods of warm weather; this occurs in all materials that are subjected to heat. A door panel that is experiencing this will revert back to its natural state/plane.

**To help reduce the effect of the thermal movement, when the door is closed ensure that the lock is thrown and the locking points are engaged.**

### How to measure

Firstly you must ensure that the door frame is fitted plumb and square.

Take measurements by placing a 2 meter straight edge against the concave side of the door and note the gap at the central point of the straight edge and the door face.

To illustrate the above method the curve in the diagram has been exaggerated.

### Checklist:

- ❶ Thermal movement will occur with UPVC and Timber products, and is normal, as the products will revert back to within its natural flat plane tolerance as the installation guidelines are observed. For optimal performance and warranty coverage, please ensure that all installation guidelines are meticulously followed. Any warranty issues related to bowing can be deemed invalid if the installation guidelines have not been strictly followed.
  - ❷ Check frame is plumb and square. Frame may need to be adjusted if not plumb and square.
  - ❸ Close the door and ensure the door locks smoothly within the frame keeps. Some adjustments of keeps may be needed to ensure that the door is pulled in to the seal against the frame.
  - ❹ Open the door and position the straight edge as indicated above on concave side.
  - ❺ Measure the gap between the the door and the straight edge at the central point, make sure the straight edge is in contact with the door and face at the top and bottom.
  - ❻ The bow measurement should also be taken on the concave side by placing a full-length straight edge against the door and measuring the deviation at the central point on the straight edge. Measurements are not to be taken on the convex side as this does not give a true reflection of bow as defined.
  - ❼ Any bowing under 5mm on the full height of slab and 3mm on the width is deemed acceptable.
  - ❽ Position the tape measure at the widest gap and take a photo, if possible. If you are concerned about the door, please follow the above instructions and forward your findings via email to [customer.care@igdoors.co.uk](mailto:customer.care@igdoors.co.uk) where your query will be investigated further.
- **Please note: As long as the door is closing into the frame and the lock operates smoothly then the door will be deemed as acceptable.**

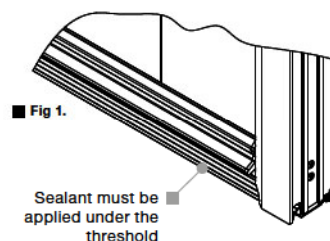
## Sill Fitting

### Low Ali & 4 Sided

# Unit with Low Ali Threshold

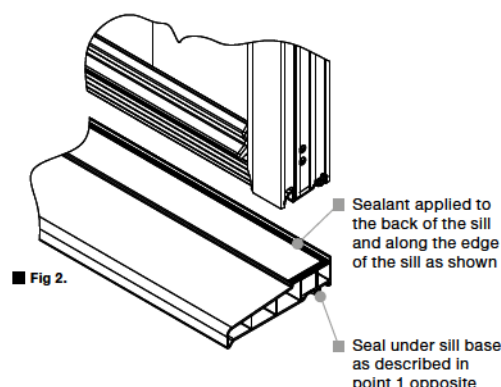
#### No PVC Sill:

- 1 Apply 2 lines of sealant to the face on which the sill will sit to prevent water ingress (See Fig 1).
- 2 Position the door unit in the aperture and level. (Place door unit on to seal, taking care not to disturb the bead of sealant).
- 3 Once installation is complete, check the drainage holes in the threshold are clear and not blocked or covered with silicone.



#### With PVC Sill:

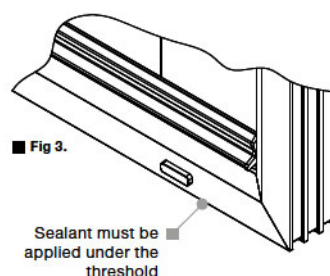
- 1 Apply 2 lines of sealant to the face on which the sill will sit to prevent water ingress (See Fig 2).
- 2 Position the sill in the aperture and level.
- 3 Apply a continuous bead of sealant to the sill as shown in Fig 2.
- 4 Fit unit to the sill and continue to install the unit as per the instruction manual.
- 5 Once installation is complete, check the drainage holes in the threshold are clear and not blocked or covered with silicone.



# Full 4 Sided Unit

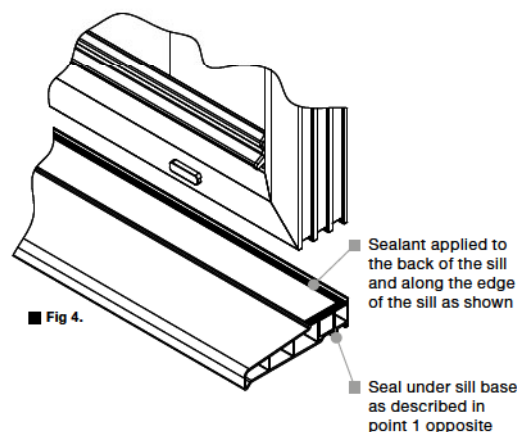
#### No PVC Sill:

- 1 Apply 2 lines of sealant to the face on which the sill will sit to prevent water ingress (See Fig 3).
- 2 Position the door unit in the aperture and level. (Place door unit on to seal, taking care not to disturb the bead of sealant).
- 3 Once installation is complete, check the drainage holes in the threshold are clear and not blocked or covered with silicone.



#### With PVC Sill:

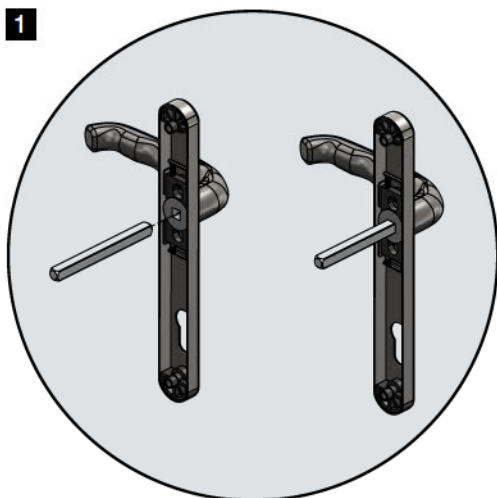
- 1 Apply 2 lines of sealant to the face on which the sill will sit to prevent water ingress (See Fig 4).
- 2 Position the sill in the aperture and level.
- 3 Apply a continuous bead of sealant to the sill as shown in Fig 4.
- 4 Fit unit to the sill and continue to install the unit as per the instruction manual.
- 5 Once installation is complete, check the drainage holes in the threshold are clear and not blocked or covered with silicone.



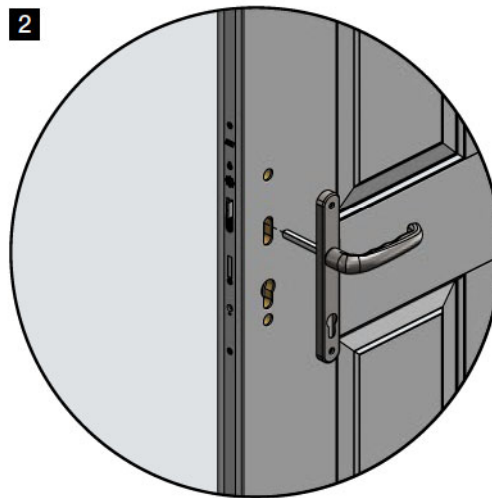


# Fitting a Lever Handle

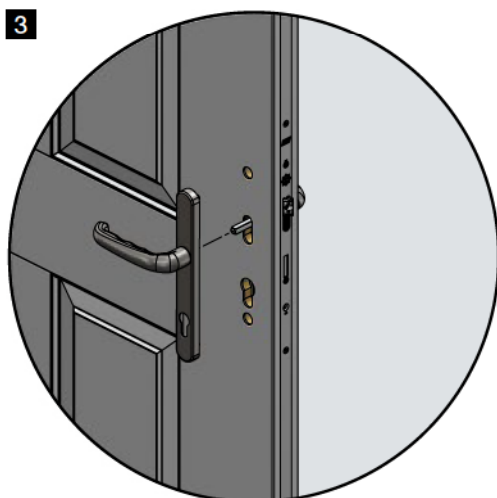
## Spindle & Lever



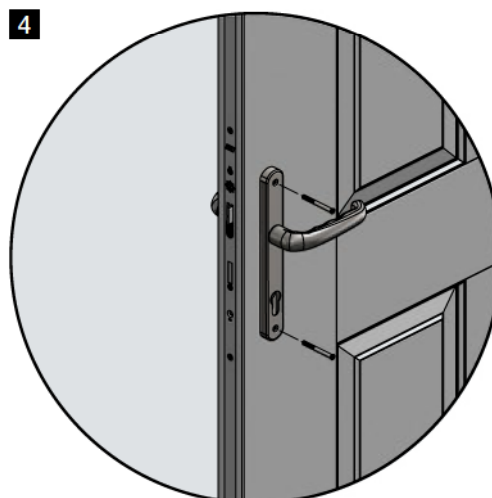
Pick spindle appropriate for the door thickness, and the internal lever, and push the spindle into the cavity of the internal lever.



Align and feed the internal lever assembly to the internal face of the door via the spindle hole on the lock mechanism.



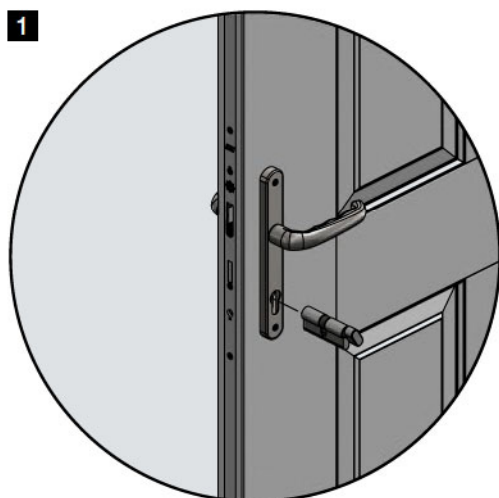
Pick the external lever component and feed it onto the same spindle from the external face of the door. Keep the levers held in place for the next step.



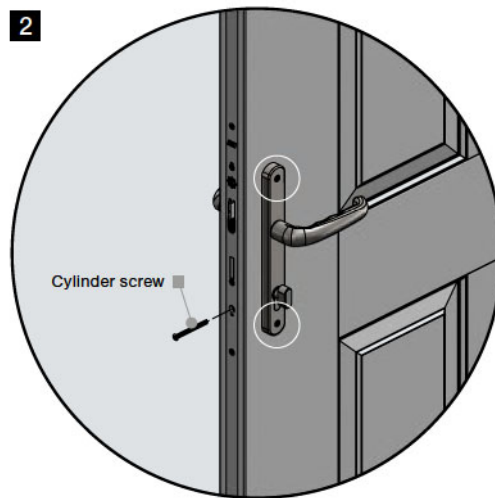
Pick x2 screws appropriate for the door thickness. Fix the levers in place by feeding and affixing the screws through the top and bottom holes found on the internal lever. **DO NOT** tighten these screws completely to make fitting the cylinder easier.

# Cylinder Fitting

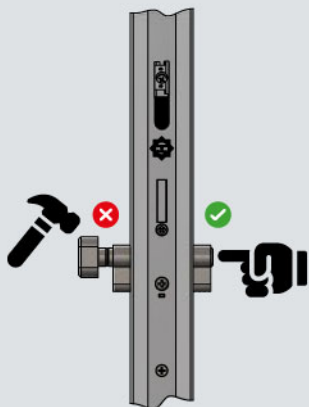
## Information & Important Notes



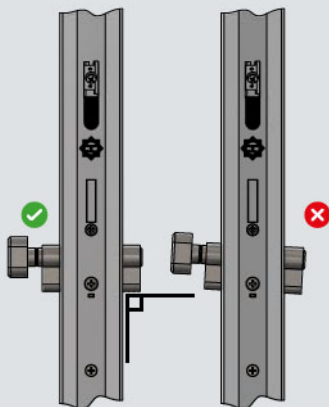
Turn the thumbturn (or key if key-key cylinder used) to the 10 O'clock position and feed into the cylinder hole on the lever until centralised within the door.



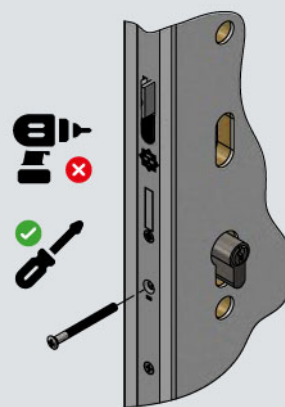
Feed the cylinder screw into the free hole on the lock mechanism, and fix the cylinder in place. Tighten completely. Finally tighten the fixing screws fully and test operation.



To fit the new cylinder, ensure the external side faces outside. Insert the cylinder into the door. **Never** force cylinder into place. Excessive force will damage the product and invalidate the warranty. Note: the maximum projection from hardware = 3mm.



The lock **must** be installed horizontally in line with the door, with the cylinder positioned at a 90° angle to it. Insert the key into the cylinder and gently turn it until the cam is centered. This alignment ensures the cylinder can slide smoothly into the door.



After inserting the cylinder, secure it using the provided retaining screw (this may need to be trimmed to fit). You might also need to re-install or tighten the door hardware. **Do not** use power tools to fit the retaining screw.



# Experience Hörmann quality in new construction and modernisation

Hörmann products have impressive durability and high functionality. You can easily plan for new construction as well as modernisation. The carefully coordinated solutions make your home more beautiful, more secure and more comfortable.

**GARAGE DOORS. GATE AND DOOR OPERATORS. ENTRANCE DOORS. RESIDENTIAL INTERNAL DOORS. STEEL DOORS. DOOR FRAMES. STORAGE SPACE SYSTEMS.**



Some of the products shown are equipped with special equipment and do not always correspond to the standard versions. The surface finishes and colours shown are subject to the limitations of the printing process and cannot be regarded as binding. All rights reserved. No part may be reproduced without our prior permission. Subject to changes.

**HÖRMANN**