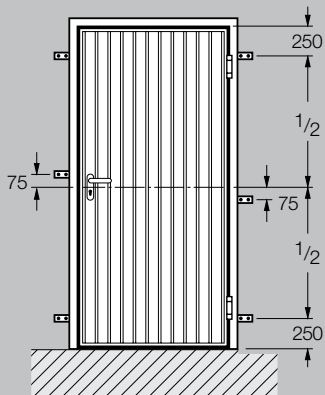


## FITTING DETAILS FOR SERIES 2000 GARAGE SIDE DOORS

## Single leaf

## Position of anchors



## Standard sizes for single-leaf doors (Dimensions in mm)

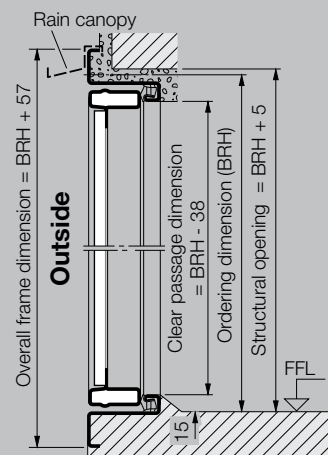
| Ordering size (BR) |        | Structural opening |        | Clear passage dimensions |                |                   | Height of lever handle from FFL |
|--------------------|--------|--------------------|--------|--------------------------|----------------|-------------------|---------------------------------|
|                    |        |                    |        |                          | with threshold | without threshold |                                 |
| Width              | Height | Width              | Height | Width                    | Height         | Height            |                                 |
| 875                | 1875   | 885                | 1880   | 830                      | 1837           | 1852              | 990                             |
| 875                | 2000   | 885                | 2005   | 830                      | 1962           | 1977              | 1050                            |
| 875                | 2125   | 885                | 2130   | 830                      | 2087           | 2102              | 1110                            |
| 1000               | 2000   | 1010               | 2005   | 955                      | 1962           | 1977              | 1050                            |
| 1000               | 2125   | 1010               | 2130   | 955                      | 2087           | 2102              | 1110                            |

Standard sizes with steel infill and open-for-infill frames are supplied for external fitting as standard. For internal fitting, fittings can be reversed. Designs with timber infill for external fitting only.

Block frame for fitting into the opening: dimensions and versions on request.

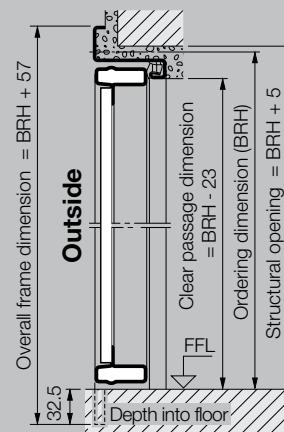
Maximum size range (BR): 1250 x 2375 mm.

## Single leaf door with stepped floor



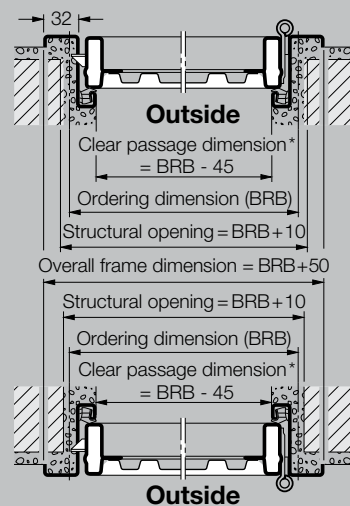
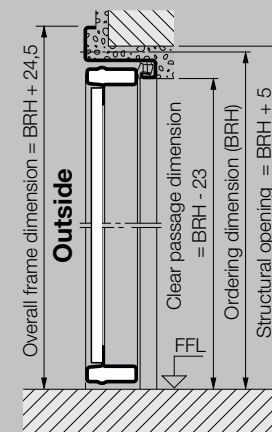
## Single leaf door

Supplied with bottom threshold as standard, will be removed on site



## Single leaf door

Supplied without bottom threshold



\* With an opening angle of less than 180°, the clear passage width is reduced.