



# Rollixo Optimo RTS

Find complete step-by-step instructions in the application "Help Me by Somfy".

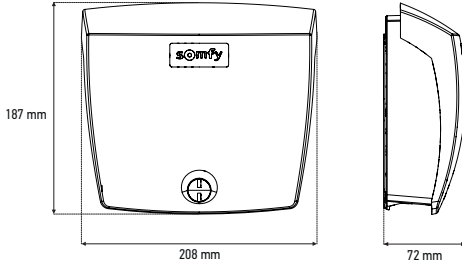
## SMART GUIDE

Original instructions

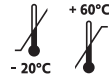
Complete instruction guides available online on [www.somfy.info](http://www.somfy.info)



"Help me by Somfy"

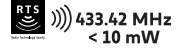


220-230 V  
50-60 Hz

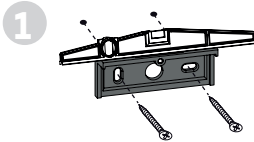


1100 W

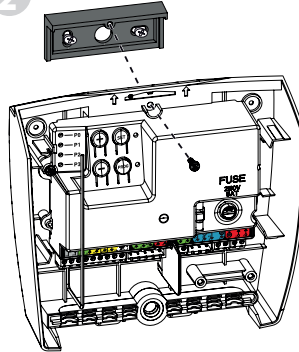
IP44



# 1

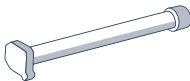


# 2



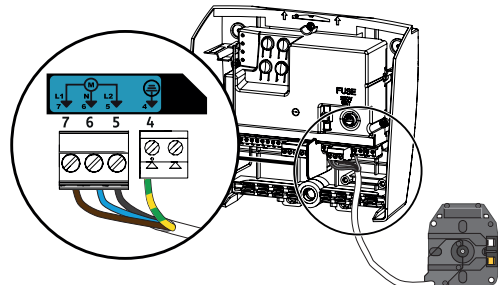
1. Fix the bracket to the wall.
2. Fix the receiver to the bracket.

# 2

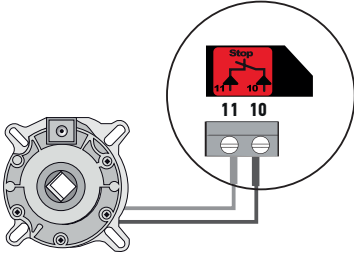


Connect the motor:

- |   |              |
|---|--------------|
| 4 | Green/Yellow |
| 5 | Black        |
| 6 | Blue         |
| 7 | Brown        |



3

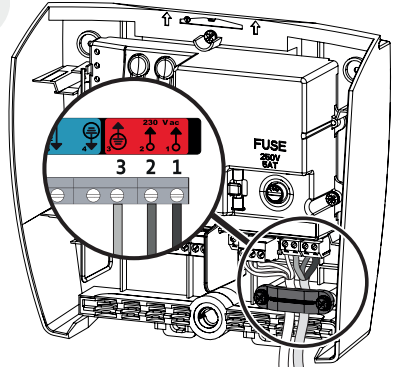


Connect the anti-fallback device.

If no anti-fallback device, connect a link between terminals 10 and 11.

4

**i** This product is pre-wired

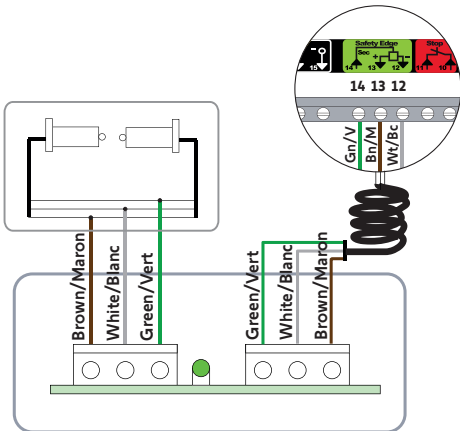


- 1 Neutral
- 2 Live
- 3 Earth

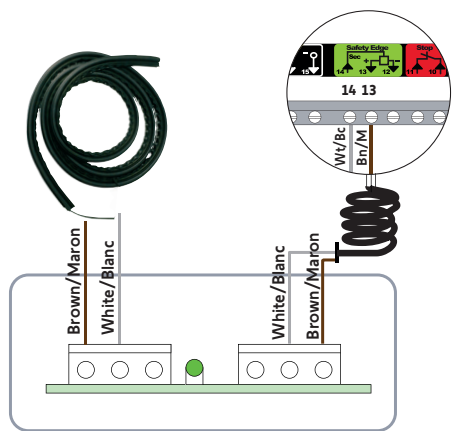
5



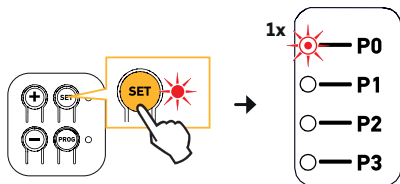
**Optical Safety Edge wiring**



**Resistive Safety Edge wiring**

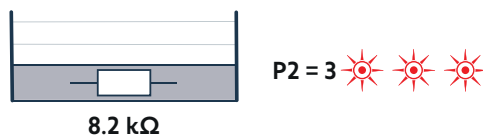
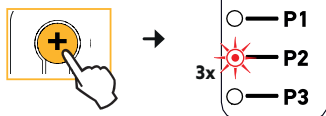
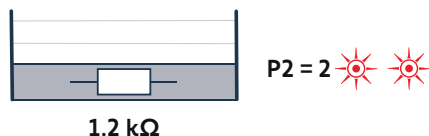
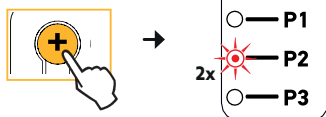
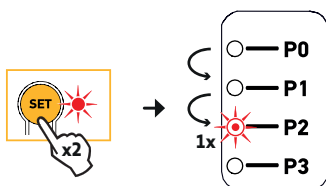


# 6



## Optical Safety Edge commissioning

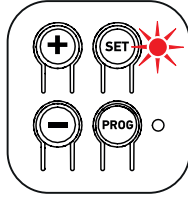
1. Press SET until the P0 light blinks.
2. Press SET twice.  
The P2 light blinks.  
The number of Blink's indicates the safety edge setting mode.
3. For an OSE edge, P2 will flash once.  
If incorrect, press '+' to change.
4. Press SET twice to complete this step.  
The SET light will now be solid.



**i** For resistive edge commissioning, please refer to the full instruction guide.

1 Blink's	Optical Safety Edge
2 Blink's	ESE Edge 1.2k
3 Blink's	ESE Edge 8.2k

7



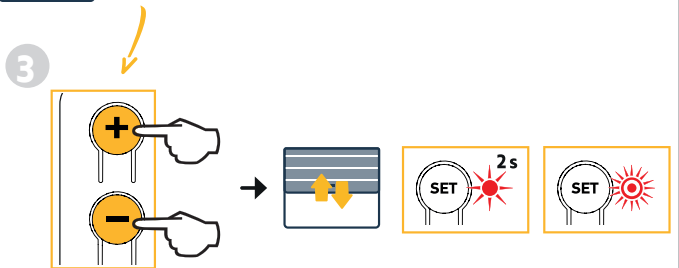
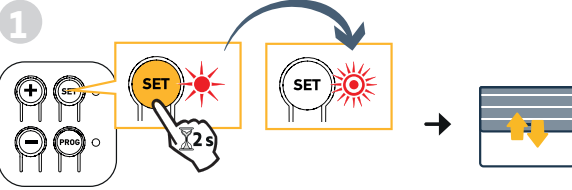
Switch the unit off and on again.

8



**Motor setup - Direction**

1. Hold down SET for 2 seconds until the light flashes.
2. Check the motor direction. "+" is up and "-" is down.
3. If the direction is incorrect, hold "+" and "-" until the door shunts once.

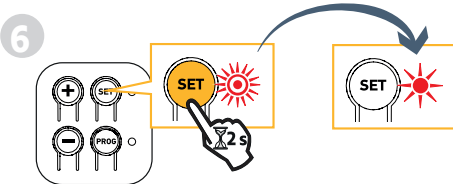
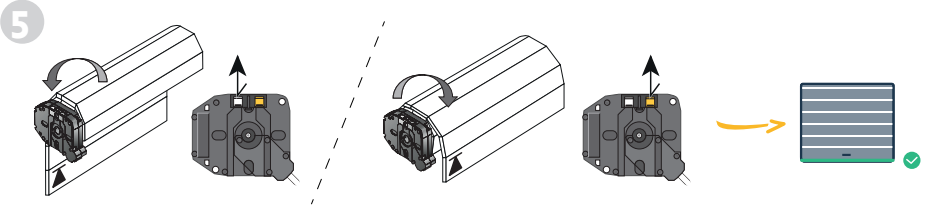
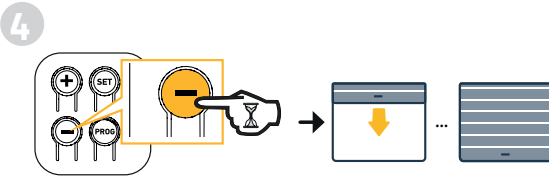
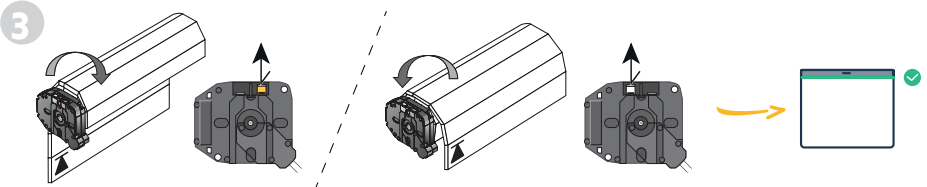
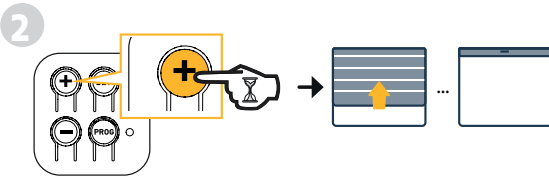
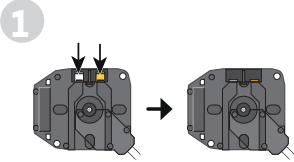


# 9



## Motor setup - Limits

1. Push both end limits down.
2. Hold "+" to bring the door to the open position. Adjust using "+" or "-".
3. Identify and release the upper end limit button.
4. Hold "-" to bring the door to the close position. Adjust using "+" or "-".
5. Release the lower end limit button.
6. Once complete, hold down SET for 2 seconds until the light lights up.



# 10

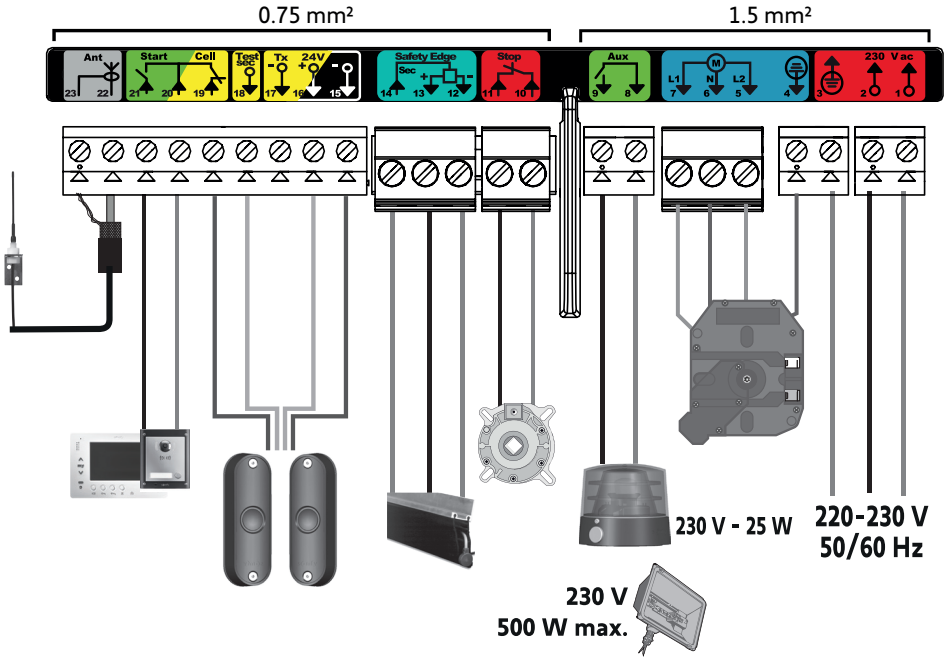


## Handset commissioning

### Keytis 2 NS RTS Setup

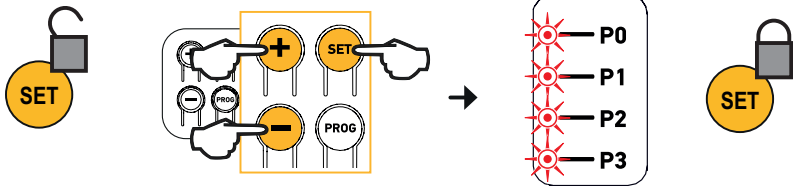
1. Hold **PROG** down for 2 seconds until the **PROG** light lights up.
2. Press the desired button  
Once paired, the **PROG** light will flash for 5 seconds.

# 11



# 12

## Locking the control panel





## Rollixo Optimo RTS

Complete instruction guide available online on [www.somfy.info](http://www.somfy.info)

Notice complète disponible en ligne sur [www.somfy.info](http://www.somfy.info)



## Rollixo Optimo RTS

From the application "Help me by Somfy" scan the QR code here to select the motor.

Depuis l'application "Help me by Somfy" scannez ce QR code pour sélectionner le moteur.

