

SeceuroGlide Sectional

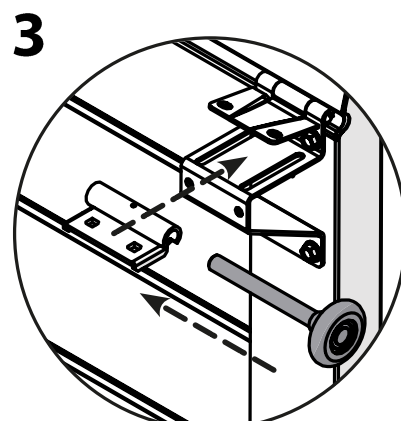
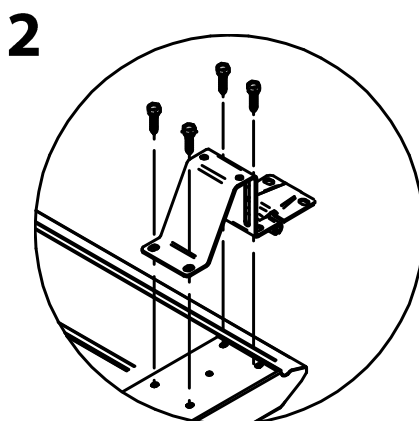
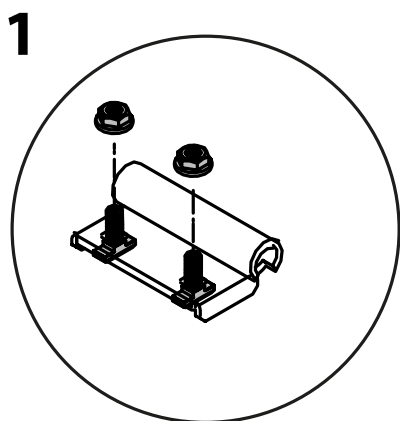
Fitting Instructions - **Addendum**

The SeceuroGlide **Sectional Garage Door** is now supplied with alternative side hinges, side hinge roller holders, top brackets and top roller brackets. Please be aware of the following changes to the fitting instructions supplied:

01. FITTING THE SIDE ROLLERS AND SIDE HINGES

The new side hinge is now supplied with the roller holder pre-attached. To fit the hinge to the panel:

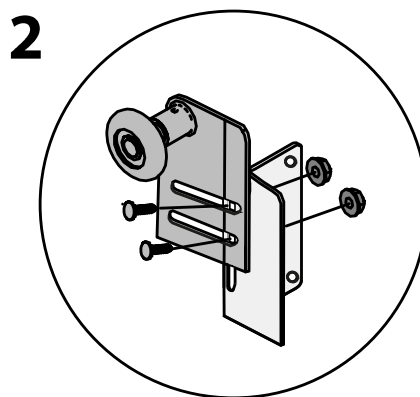
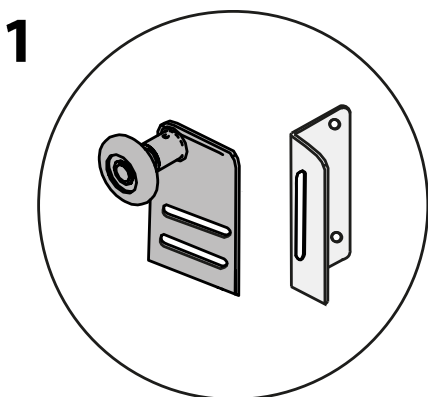
1. Remove the fixings from the side hinge roller holder.
2. Fix the side hinge to the panel's end cap, using the hex head self-drilling screws provided.
3. Once attached, fit the side hinge roller holder back onto the side hinge using the nuts and bolts.
4. Repeat the process for all side hinges and side hinge roller holders.



02. ASSEMBLING THE TOP ROLLERS

The new top rollers are now supplied in two separate parts. To correctly assemble the top roller:

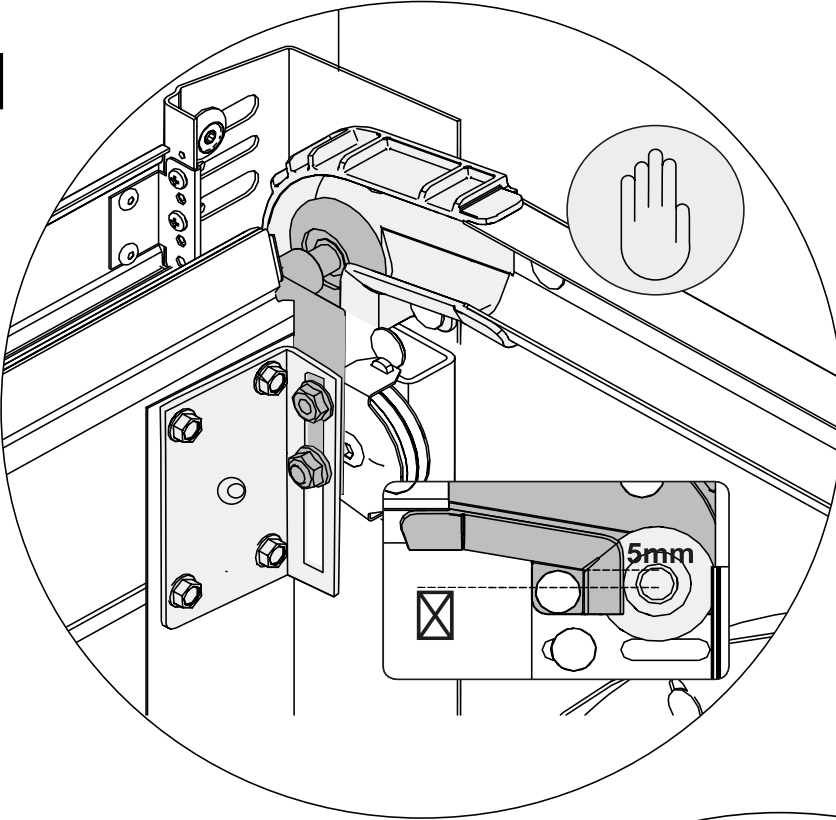
1. Line up the top roller (diagram shows the left roller) with the top panel roller carrier.
2. Make sure that the bolts are fitted on the opposite side of the roller.
3. Fix the two together, using the M6 serrated nuts and M8 x 25mm flat head bolts.



03. FITTING THE NEW TOP ROLLERS FOR MANUAL AND ELECTRIC OPERATION

1. For **manual** operation, this is how the top roller and bracket should look when fitted.
2. For **electric** operation, this is how the top roller and bracket should look when fitted.

1



2

