

The Barnham



The Harling



Painting your door?

Accoya® is perfect for painting any RAL colour, Farrow and Ball paint or similar heritage paint finishes. The Accoya® treatment process fixes all tannins and resins, ensuring no leaching of stains through the paint finish can occur, making Accoya® the ideal timber to take a paint finish.



Image courtesy of the National Door Company

The Thetford Barnham Finished to match Farrow & Ball Pigeon Grey.

Doors are shown as solid built unless stated otherwise.

* Available with square or diamond lattice leading as a no cost option.
 ** Available with windows to the top features with plain square or diamond lattice leading as cost option.(see page 34-35).

Thetford Harling in Rich Oak

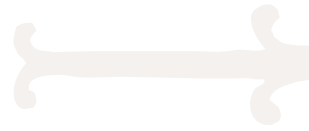
Thetford Coach house

The Thetford Coach House range

Thetford Accoya

Accoya® is a new timber that Woodrite has introduced in the form of the Thetford range. Accoya® uses a “super-technology” treatment process that acetylates the wood making it incredibly stable and able to outperform most hardwoods.

The timber used is sustainably sourced Radiata Pine. It makes a beautiful base for staining that is so inert we can offer a ten-year warranty on finish - unheard of for a timber garage door! It's perfect for painting too, with no tannins or resins to leach through.



The Culford



The Elveden*



The Fincham



The Ingham



The Northwold



The Oulton**

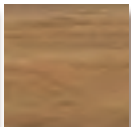


The Thetford range is available as panel-built or solid-built up and over garage doors and solid-built side hinged garage doors and personnel doors. Doors are made with selected Accoya® mouldings, tongue and grooved boards and raised and fielded panels dependent on style dependent on style. Up and over doors are available with straight arm Masta-Gear or Super-Chassis lifting Gear.

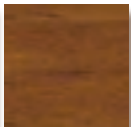
Colours



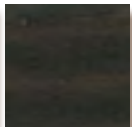
White oak



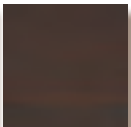
Warm Oak



Rich Oak



Ebony Oak



Rosewood



Doors with these icons are also available as side hinged and personnel doors. For hardware options see page 33.



beautiful accoya



York

York **solid-built** side hinged garage doors and personnel doors are made with selected cedar mouldings, cedar tongue and grooved boards and raised and fielded cedar panels dependent on style. No steel bracings are used, just glorious timber - from the back they look just as good with edge-to-edge timber. Doors from the Somerset, Buckingham and Balmoral up and over ranges are available in side hinged and personnel versions within the York range.

Personnel doors are designed to suite with either up and over or side hinged versions of a design. The design features of the larger door are scaled to suit the proportions of a personnel door - the Chartridge design shown below illustrates the effect. If you have a special design in-mind, get in touch - we are always able to find a solution (we're good with wood!...)



Shown with rebated frame and threshold.

A selection of styles only are show here - If you see a style you like in any of the ranges it will almost always be available in the York range - each style is marked if it has the option. If not, just call - we'll always have a solution!

Colours



* Available with square or diamond lattice leading as a no cost option (see page 34-35).

Δ Shown with rounded chamfered detailing that is available as a cost option.

Coach house york

traditional

The York Coach House range



The Adstock Δ



The Appley



The Bierton



The Bledlow



The Burnham



The Cannington



The Chalfont**



The Chalfont wide**



Side hinged & personnel doors - traditional style

Side hinged garage doors and personnel doors are constructed using traditional build methods that employ mortice and tenoned joints for rigidity.

The side, top and bottom rails are all machined using 43mm thick timbers and rebated centre rails eliminate gaps between panels for added security.

Beautifully solid, these doors are matched with high quality hardware for a long and reliable life.



Rounded chamfer detailing is available on all doors except - The Appley, Cannington, Chard, Churchill, Taunton, Tickenham, Washford, Standerwick and Yeovil.



The Chard



the Chartridge



The Chartridge Wide



The Churchill



The Coleshill*



the Gawcott



The Granborough** Δ



Shown finished in Mahogany

Hampden



The Ickford*



Doors with these icons are also available as personnel doors.

* Available with square or diamond lattice leading as a no cost option.

** Available with windows to the top features with plain square or diamond lattice leading as cost option. See page 34-35.

Δ Shown with rounded chamfered detailing that is available as a cost option.

Colours



Walnut



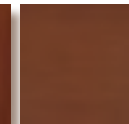
Burnt Oak



Light Oak



Antique Oak



Chestnut



Mahogany



Teak



Pale Oak



Silver



Silver Grey



Ice Silver



Slate Grey



Coach house york

classic

The York Coach House range

The Kingswood Δ



The Marston Δ



The Padbury Δ



The Quainton



The Salford Δ



The Sherington** Δ



The Standerwick



The Taplow



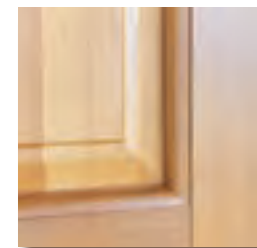
Extra details that make the difference

The quality of the joinery really sets these doors apart. Elegantly chamfered edges and other detailing is both practical, protecting edges, and attractive.

Side hinged doors have a rebated leading edge, that, when matched with one of our frames with its stop bead, creates a well finished job.

Personnel doors are available with a rebated frame and have a mortice lock and lever set as standard - the classic side door for a garage.

Both side hinged and personnel doors are available with a hardwood threshold to add a finishing touch at floor level.



Rounded chamfer detailing is available as a cost option.



The Taunton



The Tickenham



the Washford



York Whitchurch Δ



The Yeovil



Doors with these icons are also available as personnel doors.



** Available with windows to the top features with plain square or diamond lattice leading as cost option. See pages 34-35.

Δ Shown with rounded chamfered detailing that is available as a cost option.

Personnel Doors

Matching personnel doors are also available across the entire Coach House range. See website for the full range.



York Padbury Δ



York Burnham



York Appley



York Washford



York Granborough Δ

Shown finished in Mahogany

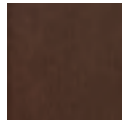


York Hampden

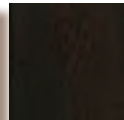
Coach house york

sumptuous

Colours



Walnut



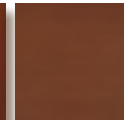
Burrit Oak



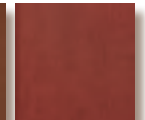
Light Oak



Antique Oak



Chestnut



Mahogany



Teak



Pale Oak



Silver



Silver Grey



Ice Silver



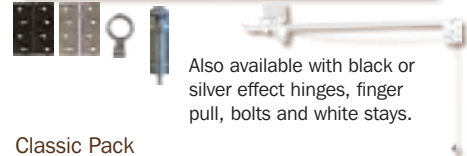
Slate Grey

The York Coach House range





Contemporary Brass Pack (Standard)



Also available with black or silver effect hinges, finger pull, bolts and white stays.

Classic Pack



Also available with silver effect hinges, finger pull, bolts and white stays.

Traditional Pack



Personnel doors have a mortice lock and lever in brass effect as standard. Side hinged doors can also be fitted with this as an alternative to the standard night latch. Also available in silver effect and antique.

Quality hardware

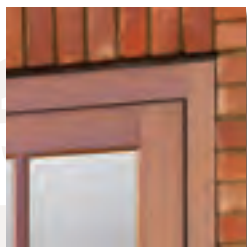
Side hinged garage doors and personnel doors are hung with three butt hinges per leaf or with the option of a pair of classic strap hinges in black or silver colour or traditional strap hinges in black wrought iron.

Side hinged doors have a night latch and finger pull (commonly used on front doors) with the option of a mortice lock and lever set – see individual furniture packs (right) for details. Personnel doors have a mortice lock and lever set as standard. Side hinged doors have shoot bolts top and bottom to secure the inactive leaf and door stays to hold the door in the open position.



Custom York Chalfont in light Oak

Image courtesy of Openings

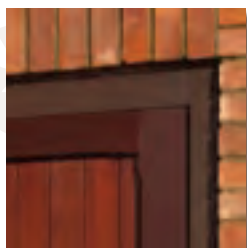


Frames?

All doors are available with the option of a frame. Frames are built from galvanized steel and finished in white or brown or a choice of soft or hardwoods.

Super-Chassis Doors up to 10'0" wide X 7'0" high (3048mm X 2134mm) are supplied with the frame pre-fitted to the door. Doors over this width or height are supplied with the frame as a knockdown kit for assembly on site. Timber frames are supplied as knockdown kits and can be finished to match the door panel for a coordinated look.

For full sizing details on frames and all doors see our price list.



Steel White (Super-Chassis)

Steel Brown (Super-Chassis)

Hardwood

Accoya



Softwood



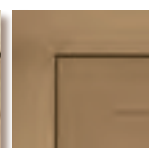
Cedar Clad Softwood



Cedar Clad Hardwood



Idigbo



Oak



Rebated Personnel

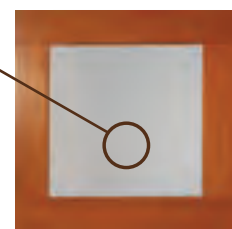
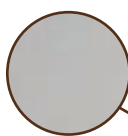
A word about windows

Doors that feature windows are constructed with sections of stippled polycarbonate that allows light to pass into the garage but cannot be seen through. Clear polycarbonate is available as a no cost option. A further option of 4mm toughened glass in stippled or clear is available as a cost option.

All styles depicted with windows are available with square and diamond leading as a no cost option.

The Granborough, Sherington, Grafton, Oulton and Dorchester from the Buckingham, Balmoral, Warwick, Thetford and York ranges are available with windows as a cost option.

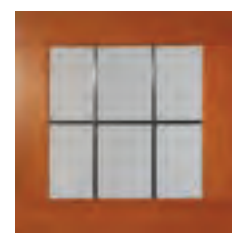
Please Note: Doors with windows may have cross bracings/metal plates visible behind windows depending on door style/size and gear type.



Stippled Plain



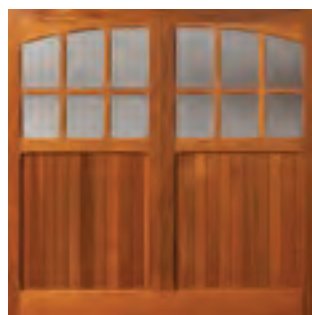
Stippled Diamond Leading



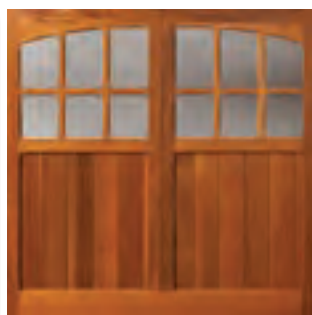
Stippled Square Leading



Clear



Narrow board



Wide board

Wide board

Design variants are easily accommodated - standard designs that feature narrow boards can also be built using wide boards, giving designs a more "solid" look. If you'd like this option or any other detailing just get in touch and we'll confirm what can be achieved - wood is a very flexible material and we're happy to work to your designs - its all part of the Woodrite way! Whilst the precise size of boards varies from design to design, typically narrow boards are 85mm wide and wide boards 138mm.

Finishes

All doors are treated with a base coat ready for staining. Fully finished doors are also available in a range of wood colours and solid RAL paint colours. Woodrite uses the TEKNOS wood finish system for Cedar, Idigbo, Oak and Accoya® and recommends this for on site finishing - contact Woodrite for your nearest stockist. Photographic and printing processes make it impossible to guarantee colours from this brochure and images are intended as a guide only. The available finishes are displayed with each door type.



versatile **options**

Natural colour variation

All doors will show a natural variation in the depth and shade of colour across the timbers that make up the door. The image right shows the effect of the base colour of the timber on the finished colour. All are Cedar, treated with our basecoat preservative (1), the first coat of Light Oak (2) and the final second topcoat of Light Oak (3). The colour variation across a light, medium and dark mottled timber can be seen from left to right. All Woodrite doors are made from timbers selected to blend well for depth of colour, however, by its very nature, uniformity for every door is not possible.

Some doors will be made from predominantly darker timbers and some will be made from predominantly lighter timbers. Each will have a different density for the same colour finish so if you are matching to other timbers, talk to our customer services team about samples.



Care & Maintenance

Doors Finish

These notes are for guidance only and do not form any part of the guarantee given with your door. Woodrite Doors Limited uses only the top grades of timber available however timber is a natural product therefore colour grain and finish will vary from panel to panel.

A regular visual inspection of your door is essential with periodic cleaning of the door panel using warm water and a soft clean cloth or sponge. Allow the door to dry naturally never use detergents abrasives caustic or solvent based cleaners as they may damage the door surface. Bird droppings should be removed immediately as these can be particularly caustic. Initial application and periodic treatment should be carried out strictly in accordance with the wood stain manufacturer's instructions. Failure to follow these instructions will result in early deterioration of the timber panel.

Doors Supplied Basecoated Light Oak (Western Red Cedar only)

Preparation

Lightly de-nib all surfaces with fine grade abrasive paper e.g P280 or P320 rubbing in the direction of the grain to produce a smooth finish and provide a key for subsequent coats of decorative stain. Wash the surface with clean warm water to remove any dirt grease and all de-nibbing dust and allow surfaces to dry naturally.

Method of Application

The stain should be applied in a full flowing coat using a long synthetic bristle brush laying off in the direction of the grain and using the minimum number of brush strokes necessary to produce an acceptable finish. Avoid over brushing as this will reduce the protection afforded. Always pay special attention to any area of exposed end grain tops and bottoms of doors and undersides of thresholds. Your door must be treated on both sides and all exposed timber to the sides tops and bottoms.

Plywood doors + Raised and Fielded panel doors

Decide on whether to start on the left or the right hand side of the door. Coat the cedar moulding around the first panel then complete the panel itself carefully wiping excess stain from the face of the moulded section with a damp cloth. Treat each panel in the same way until all panels are coated.

The faces of each of the vertical uprights between panels should then be coated with any excess coating on horizontal rails wiped off with damp cloth to avoid build up of stain at each vertical/horizontal join. The top horizontal rail should then be finished and finally the bottom horizontal rail.

Tongue & Groove panels

Decide on whether to start on the left or the right hand side of the door. Coat the first section of boarding leaving the outer rails until later. Brush the stain into the grooves each side of the first board then fully coat the complete board. Carefully wipe off excess stain with a damp cloth from the outer vertical/horizontal rails to avoid build up of stain which may dry before the door can be completed. Brush stain in to the next groove and finish the board remove excess as described above. Complete the full width of the door in the same manner. The top horizontal rail should be coated followed by the bottom rail finally finishing with the vertical rails.

Two coats of top coat stain should be applied to all exposed surfaces. The second coat should be applied to all exposed surfaces as soon as possible after the first coat has dried but no sooner than 5 hours.

Weather Conditions

Do not apply if there is a risk of rain high winds or when air temperatures are below 8°C or above 25°C during application and drying periods. Protect from frost and rain until dry failure to meet these requirements may adversely effect the drying visual quality and durability of the finish.

****Please note these are guidance notes only – always use a top quality water based stain and ensure you read the stain manufacturer's instructions carefully prior to finishing your timber door****

Maintenance of Fully Finished Western Red Cedar Doors and Existing Coatings

The period between maintenance applications will vary and is dependent upon the degree of exposure elevation and design of the door panel. A lightening of colour reduction in sheen as the coating erodes and a loss of water repellency indicate the need for maintenance. Follow instructions for the Basecoated door – if a definite colour change is chosen more than one coat maybe required.

Doors Supplied White Primed (Western Red Cedar only)

Timber panels that have been supplied White Primed have been given one coat of a water borne tannin blocking primer that has been spray applied under factory conditions. Western Red Cedar can be problematic when using white or light colours as a finish - the soluble extractives contained within the timber that can leach through a water borne coating system.

To reduce the risk of this phenomenon occurring it is recommended that a solvent borne coating system is to be applied over the water borne primer. The primer is compatible with most commercially available solvent borne coating systems but it is always advisable to try a small test area. Even using a solvent borne system does not guarantee that it will not occur. Irrespective of the product selected always follow the manufacturer's technical instructions and pay particular attention to end grain at the top and bottom of the doors.

Doors Supplied Fully Finished RAL Colours (Western Red Cedar Only)

Timber panels that have been supplied factory fully finished have been given one coat of a water borne tannin blocking primer and two top coats that have been spray applied under factory conditions.

Western Red Cedar can be problematic when using white or light colours as a finish - the soluble extractives contained within the timber that can leach through a water borne coating system. To reduce the risk of this phenomenon occurring when re-treating it is recommended that a solvent borne coating system is employed. Always follow the manufacturer's technical instructions and pay particular attention to end grain at the top and bottom of the doors.

Fully Finished Idigbo Accoya & Oak Doors

To help optimise the life of surfaces factory treated the following procedures should be followed. All vertical treated surfaces should be at least annually cleaned to remove all atmospheric soiling. If you need to re-stain your door a fine grade abrasive paper e.g. P280 or P320 should be used rubbing in the direction of the grain to produce a smooth finish and provide a key for subsequent coats of stain. Wash the surface with a damp clean cloth or sponge and allow surfaces to dry naturally.

Apply new coat of stain in accordance with the manufacturer's instructions.

Door Gear – Masta-Gear or Super-Chassis

Door lifting gear is guaranteed for a maximum of two years against any form or manufacturing defect from date of purchase. See the back page for applicable conditions.

Upon Installation

Immediately after the door is fitted and after every 5000 operations of the door or at least once a year oil all pivot points check screws and clamp connections for tightness. Keep the running tracks clean (do not grease them) check parts and replace any worn components as necessary.

Springs should be replaced after approximately 25000 operations by an experienced door fitter.

Do not oil the lock cylinder. If it is sticking lubricate with graphite dust.

Check the lifting cables on canopy doors every 6 months with normal usage (8 ops per day). Cables should be replaced by an expert if any wear is found.

Coach house

